

About[©]

Our Bay & Basin

JULY 2023

Vol 20 Issue 6

LOCAL BUS SERVICE

New local services

About Monthly Feature
THE BLOCK

Bendigo supporting the
StandbyU Foundation

Swan on St Georges Basin. Photo submitted by John Shephard

 Sanctuary Point Districts
Community Bank Branch

 bendigocb_sanctuarypoint

BENDIGO COMMUNITY BANK ATM conveniently situated at KERRY ST SANCTUARY POINT.



FREE



Advertising Package
when you sell or rent with us!*



39 Anson Street, Sanctuary Point



36 Panorama Road, St Georges Basin



22 Sanctuary Point Road, Sanctuary Point



17 Ridgeland Drive, Sanctuary Point

Luxury By The Basin

77 Walmer Avenue
Sanctuary Point

- Integrated audio/visual system including iport docks in each room
- Under floor heating through the entire property
- Back to base Security System with five cameras and three intercoms
- Commercial fire compliance with emergency lighting
- Outdoor heating in alfresco areas
- 10kw Solar System
- Disable access via lift



FOR SALE



Kevin Johnston

m: 0423 381 461

e: kevinjohnston@oneagencyepg.com.au

Huskisson
4441 8880

Nowra
4423 6000

Albion Park
4257 4515

oneagencyepg.com.au

ONE AGENCY
ELITE PROPERTY GROUP

Featuring in this issue



3 What is a SCAM?

Be aware with some handy tips to avoid being scammed

Swan on St Georges Basin. Photo submitted by John Shephard

8 Ison & Co

End of an era for Sanctuary Point store

10 StandbyU Foundation

Who are they? What do they do?

13 Local Bus Service

Sanctuary Point Community Pride

17 About Home Cooking

Orange Chicken

18 Intergenerational Connection

19 Community Noticeboard

22 What's On

28 About Monthly Feature

The Block

30 About Libraries

Winter School holiday fun

39 Noahs Inclusion Services

Let's Read!

40 Schools Corner

VPS, StGBPS & VHS

CONTACT DETAILS

Contributions Please submit your contributions for the **August 2023 issue by 5th July** and the **September 2023 Issue by 2nd August** to

The Co-ordinator

editor@aboutbayandbasin.org
PO Box 180
Sanctuary Point NSW 2540
Phone: 0478 607 829

Advertising Enquiries 0478 607 829
ads@aboutbayandbasin.org

Distribution Enquiries 0478 607 829
distribution@aboutbayandbasin.org

Printing

About.....® magazine is proudly printed and typeset locally by **Sanctuary Point Printing**, phone **4443 0014**

8,000 copies carefully distributed to homes and business in Wandandian, Bewong, Tomerong, Falls Creek, Basin View, St Georges Basin, Sanctuary Point, Old Erawal Bay, Erawal Bay, Huskisson, Vincentia and Woollamia. We are also supported by many local businesses.

About.....® accepts no responsibility for any article, advertisement, notice or letter published. Any article, advertisement, notice or letter is published at the risk of the contributor, who accepts liability for any intended publication. All contributors forwarding articles, advertisements, notices or letters agree to indemnify the publisher and warrant that the material is accurate, not deceptive or misleading, in breach of copyright, defamatory or in breach of any other laws or regulations. *About.....*® reserves the right to edit contributions and there is no guarantee all material submitted can be published. All views expressed in this publication are those of the contributors and are not necessarily those of *About.....*®

A Word from the Editor
WELCOME TO OUR JULY
EDITION OF THE *About.....*®
MAGAZINE.

In this month’s issue you will see on page 3 an important announcement from Bendigo Bank. The bank has partnered with **Mission Australia** and **StandbyU** to assist people in the Bay & Basin area who are victims of domestic violence, what a fantastic way to distribute some of the bank profits.

July is also known for **Dry July** a great charity that every year raises money for people effected by cancer. It is a win/win charity, go dry in July is good for your own health but also will raise much needed money to support cancer suffers. Give it a go this year. Go to www.dryjuly.com to sign up.

This months must reads:

- StandbyU – pages 10–11
- Monthly Feature “The Block” – pages 28–29
- What Lies Beyond, Mozambique – page 35

Regards and happy reading, Editor



Cassie’s Cuts Curls & Colours

All aspects of men’s and women’s hairdressing

FACIAL WAXING, EYELASH & EYEBROW TINTING

RELIABLE & FRIENDLY SERVICE WITH GREAT AFFORDABLE PRICES FROM A VERY COMFORTABLE HOME SALON

10am – 5pm TUESDAY, WEDNESDAY, THURSDAY
(After hours and Friday bookings available upon request)

4443 7643
0422 224 541

26 Naval Parade, Erawal Bay

What is a SCAM?



Scams continue to be on the rise, so it's a good time to remind everyone about what they are. A scam is a dishonest scheme or fraud on an unsuspecting person. Scams cost Australians millions of dollars each year and anyone can be targeted. From dating scams to fake shopping websites and 'get rich quick' offers, scammers use many different methods to try to steal your money or your sensitive information. Scammer's messages can be highly sophisticated, often using brands and logos to make their messages look like the real thing.

What types of scams are we as a bank seeing?

Phishing scams: This is when a scammer contacts you via email, phone, text or through social media, pretending to be a legitimate organisation. These scams may also include emails with links which provide scammers with remote access to your device if you open and click on them. Remember, banks, service providers and telecommunication companies will NEVER ask you to update your personal or billing information by clicking a link in an email. Contact the company via another channel to confirm if the email is legitimate.

Business email compromise and invoice hacking scams: This is where criminals use information they have obtained by hacking into your computer or computer systems. *Here's how it works:* A scammer posing as one of suppliers will tell you that their banking details have changed. They may even use letterheads and branding to convince you they are legitimate. They will provide you with a new bank account number and ask for all future payments be processed to the new account. This scam is usually detected when the regular supplier calls to ask you why they have not been paid yet!

Again, if you are unsure of the email notification, contact the business straight away. Be extremely wary of unexpected emails from individuals in very senior positions at a company requesting you to transfer funds.

Remote access scams: These scams happen when a scammer contacts you via phone, text or email claiming to be a company you may be familiar with. This is usually your bank, a utility company, telecommunication service or government agency. Scammers will trick people into gaining access to their phone or computer, providing them full access to personal information from a remote location.

How do you avoid being scammed? In a nutshell:

- Don't open suspicious texts, just delete them
- Don't click on links in unexpected emails or text messages from people or organisations you do not know.
- Don't enter or provide your credit or debit card number to people sending unsolicited emails, unfamiliar websites or callers
- Don't respond to callers asking for information about – or remote access to your computer **HANG UP IMMEDIATELY!**
- Keep your personal details secure
- Choose your passwords carefully – protect your accounts and importantly, your WiFi network with a secure password.
- Back-up your data regularly and securely
- Beware of any requests for your personal details or money

If you think you have been a victim of a scam, you need to let the Bank know immediately!

Until next month,

Anthony van Breugel – 4443 9825

Basin Villages Forum

basinvillagesforum.asn.au PO Box 37, St Georges Basin 2540

Forum (BVF) is the recognised CCB (Community Consultation Body) set up by Council to assist local residents with problems that arise in their area. Forum is notified by Council of their own issues and policies sometimes requiring comment. It is normal for at least one Councillor to attend Forum meetings mostly with an ability to inform and assist residents.

NOTE: Birdlife Shoalhaven Representative with theme Birds in Backyards will speak at July meeting. All welcome.

The May meeting was streamlined to ensure an informed but shortened evening.

Issues arising were:

- Still no response from Council re Forum's request for rezoning of land at Erowal Bay.
- Follow up. Complaint from Basin View residents re dangerous road situation with damaged road service and continued bus use followed up by Councillor Kotlash. Council Engineer advised section would be on road repair list.
- Basin View. A resident highlighted problems with uncontrolled bushland lot leading to Council pumping station. Forum rep follow up.
- Community Consultative Body's (CCBs) concerns re Council's Insurance with combined CCB meeting and subsequent contact with Council has realised a workshop set up to discuss Policies and Insurance.
- Policies requiring input were: Councils Review of Access Areas for Dogs Policy closed 11th June.
- Residents were updated on the Pedestrian Access and Mobility Plan (PAMP) out for comment. Closing date May 11.

- Council request for input into Bushfire Management Survey <https://www.rfs.nsw.gov.au/plan-and-prepare/managing-bush-fire-risk/bush-fire-management-committees/shoalhaven>
- The issue of RSPCA's project '**Keeping Cats Safe at Home Indoors**' highlighted. Motion moved to contact Council, State Govt Ministers etc noting Forum's support for the Project with request for a review of NSW Companion Animals Act 1996 ensuring local Councils have power to formulate their own policies.
- Councillors, Council staff and Forum representatives walked The Old Wool Rd (Heritage) track with positive response from Council to ensure protection for the vegetation, the track & Council's Community owned Natural bushland (2.2 hectare) lot adjacent to The Old Wool Rd.
- Notification – comment required re the Basin Village Green reserve on Island Point Rd, SGB with proposal to change zoning from Operational to Community land. An outcome lobbied by BVF for some years. Letter of support to be sent.
- Sanctuary Point Library modification re trees and car park areas.
- Forum Facebook site to be updated and up and running ASAP.

Next meeting of Basin Villages Forum 17th July 7.30pm – supper provided. Due to questions raised with insurance, check Forum website for changes or cancellations.

Enquiries 0424 100 051

basinvillagesforum.asn.au

July Meeting

Birdlife Shoalhaven – Birds in Backyards ■



BAY & BASIN DENTURES VINCENTIA

Your Denture Specialist

32B The Wool Road Vincentia
(next to Osteopath)

Offering:

- Full and partial dentures, denture repairs, relining, repairs (same day)
- We accept NSW Healthcare Vouchers Veteran Affairs & Health Insurance cards
- House calls for Nursing Homes and those not able to visit the clinic
- Payment plans can be arranged



Ismail Larney
Dental Prosthetist

Ish became involved in Dental Prosthetics (Denture making) through his passion for painting and sculpting. From a very young age he carved his family's firewood. He was able to link his passion for carving and sculpting to his career and by restoring the facial features of maxilla facial patients.

He manufactured artificial eyes, noses, ears, cast metal splints and obturators for many years at the Sydney (United) Dental Hospital.

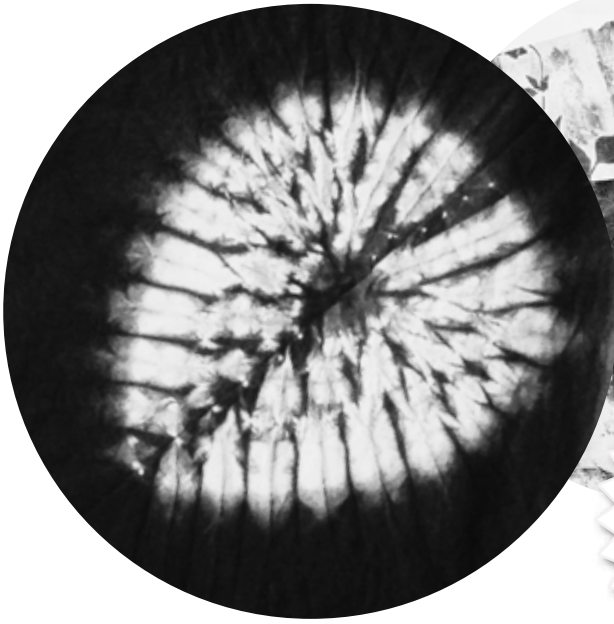
Ish has over 30 years experience in making dentures. He became a dental tutor in 1986 and recently retired from teaching however, his retirement was short lived and Ish has now opened a private practice in Vincentia so he can continue doing what he loves best.

When he is not in the practice Ish does voluntary work with Poche Centre for Indigenous Health (University of Sydney).

Come in and have a chat, we are here to help!

Ish 0410 683 658
Bianca 0438 130 487





Let's Make Things Together

ART & CRAFT WORKSHOPS

Paper Sculptures, Artist's Books, Indigo Dyeing,
Coiled Pots, Gelli Plate Printing, Papier Maché
Animals, Felted Jewellery, and more



19-20 AUGUST 2023

Huskisson, Jervis Bay



Book Now
artsmuster.com.au

www.isonandco.com.au



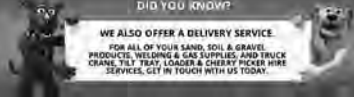
ISON & CO. PTY. LTD.

TIMBER & HARDWARE MERCHANTS
BUILDERS SUPPLIERS

- Helping Build the Shoalhaven for 100 Years -

NOWRA: 4421 7555
HUSKISSON: 4441 5970
SOUTH NOWRA: 4421 4288

HOME
TIMBER & HARDWARE
GO WHERE THE TRUCKS GO



ptimum

Automotive & Towing

Est 30 years



- * Professional Repairs for all Makes & Models
- * Rego Inspection Incl. LPG
- * New Car Warranty & Log Book Servicing
- * Customer Vehicle Pick Up & Delivery
- * Towing Service 24/7
- * Battery Testing & Fitting
- * Radiators
- * Break Down Service

Your Local **NRMA**
Car Electrics & Battery Agent

TFLC NO 11051 / MVRIC NO 42087

4441 8970 0412 472 284 (AH)

2/7 Snapper Road, Huskisson

Bendigo Bank

The better big bank

Not only is the Sanctuary Point Community Bank a full service bank, we also offer a number of insurance products:

- Home & Contents
- Motor Vehicle
- Landlords Insurance
- Travel

Bendigo Insurance products are underwritten by CGU Insurance, so you have the confidence of being well protected. It's never been a better time to review your insurances - especially home and contents and landlord insurance.

Natural disasters have seen premiums rise substantially.

Further, due to the impact of COVID and impacts on supply chains, the cost of constructing homes has risen dramatically in the last year, so many people are under insured as they have not reviewed their level of cover.

So call in and let us review your insurance and make sure your greatest assets are fully protected at a competitive premium.

1/200 Kerry Street, Sanctuary Point

t: 02 44439825

e: SanctuaryPoint@bendigoadelaide.com.au

f: communitybanksanctuarypointdistricts

g: communitybanksanctuarypoint

bendigobank.com.au

EDS PROPERTY MAINTENANCE

ABN 66 354 081 923



NOW OFFERING GUTTER VAC CLEANING

Specialising in GUTTER & SOLAR PANEL CLEANING

Free Quotes • Fully Insured

Working from heights qualified

Over 20 years industry experience

0417 496 793





Ison & Co Pty Ltd is a wholly Australian owned company. Ison & Co Ltd was incorporated in Nowra. The Directors, have an extensive background in Timber and Hardware retailing, gained in part from years of experience as employees of Ison and Co Pty Ltd. Ison and Co Pty Ltd now operates three stores which stock quality products supplied by both Australian and International manufacturers.

The company was established in Bridge Road Nowra in 1917, it has four Directors, a Human Resource Manager and, three Store Managers, three 2IC's, a Purchasing Officer, a mobile Sales Rep and at least fifty other full time sales persons and twenty other employees such as crane drivers, and delivery drivers who deliver daily to customers as well as delivering to the company's other stores.

The Head and Administration office is located in the offices on the first floor and the ground floor of the building housing one of its stores in Bridge Road Nowra. A second store is located at South Nowra which is the biggest complex, with another store located in Huskisson.

Management Experience

The company has a management team. Below is a brief profile of the senior managers.

Directors: Margaret Prott, John Ison, Philippa Loadsman and Paul Ison have all had the experience of starting with the company from an early age after leaving school. These people have become Directors since the passing of their father in the middle 90's.

John Ison oversees the sawmill, with more than 50 years experience working with timber.

Paul Ison has 38 years experience in charge of the vehicle fleet, supervising customer deliveries as well as the crane section.

Margaret Prott and Phillipa Loadsman have for many years supervised the company's accounts and administration.

Date of Establishment: The name, Ison & Co Ltd was registered in 1921 and after that date went on to be incorporated on 30th June 1959.

This date of establishment shows that the company has survived through the depression years and the recession years to present time.

Currently of competitive nature to any opposition, the company is still finding that it can progress in areas where the opposition is demanding and not so demanding.

Locations: Ison & Co Ltd was established with a sawmill at Nowra in 1917 and was only selling timber.

The company now has three stores, one in the centre of Nowra which caters for a wide population of surrounding growth areas north of the Store and from within the CBD. There is adequate parking within the company's grounds.

The store at South Nowra, which is the biggest of the three stores, is situated on the outskirts of Nowra town and provides for most of the areas south and east of Nowra. This store has ample parking and caters for truck parking.

The other store is situated at Huskisson, and services the population from the surrounding areas such as Vincentia, Huskisson, St Georges

Basin, Basin View, Erowal Bay, Old Erowal Bay, Hyams Beach, Falls Creek and Jervis Bay.

Recently the store located at Sanctuary Point, closed after 30 years to consolidate the business with the Huskisson/Woollamia store.

Ison and Co are great supporters of the local community, with continued sponsorship of the Bay and Basin Community Radio <https://www.927fm.com.au/>, Annual Marine Rescue Duck Derby, Cancer Council Relay for Life, National Heart Foundation, Noah's Ark, Shoalhaven Hospital, various other one off donations to local community groups eg, Sanctuary Point Community Pride, Sanctuary Point Community Hub. Ison and Co also assist local high schools offering work experience placements. ■



Ian's Keys & More.....



- ✓ Most types of key cutting for home or vehicle
- ✓ Remote Control repair and replacement
- ✓ Engraving for identification or personalisation
- ✓ Watch repair, battery and band replacement
- ✓ Gifts, Pet Tags and Personalised Cake toppers

Shop 9, Burton St, Vincentia
Ph: 4441 7648 – e: ianskeys@mail.com


Michael Sinclair 

A.B.N. 12 142 024 884 ~ Lic No: L3230

Complete Plumbing & Draining Service

- High Pressure Drain Cleaning
- CCTV & Leak Detection Services
- Driveways Cleaned

Ph/Fax: (02) 4443 8597
Mob: 0418 411 911
1 Waratah Crescent, Sanctuary Point



SHOALHAVEN NEIGHBOURHOOD SERVICES INC.

Stronger connections. Stronger communities.

Volunteering opportunities await

Shoalhaven Neighbourhood Services has been offering support to the community for over 45 years through a variety of programs such as the Neighbourhood Centres, Social Support services for people over 65 and Aboriginal and Torres Strait Islanders over 50 and personalised services for people who have an approved NDIS plan.

One of the key contributing factors to providing these successful services is the generosity of people in the community to volunteer their time. Currently there is volunteering opportunities available for people who live in the Northern Shoalhaven region, including gardening, administration and reception tasks or visiting people over 65 or have a disability and spending time with them either in their home or assisting them to access the community.

Your time could be spent together enjoying a coffee, having a chat, playing games, telling stories, accompanying and assisting our clients with their shopping, attending appointments or going to cafes, museums or group outing activities.

If you would like to know more please contact Shoalhaven Neighbourhood Services on 4421 5077 or email info@sns.org.au or visit the website www.sns.org.au.



Renovations, Kitchens, Bathrooms, Laundries & Waterproofing (certified)

FREE measure and quote

Terry Irvine
0414 974 424

Fully Qualified, Licensed & Insured
Lic No. 271142C



StandbyU Foundation

Submitted by Chris Boyle - www.standbyu.org.au

As a social worker, I have worked across the child protection and domestic violence sectors for 25 years, and witnessed the impact that abuse, violence and isolation have on our most vulnerable children, families and entire communities.

One woman being murdered on average every week is an uncomfortable and difficult headline to read. We have tried to police our way out of this issue for 40 years and it hasn't worked because systems are designed to react, not prevent.

As we have seen recently, and far too often, the reaction time for those to get help is far too late. There is a growing feeling of frustration across the community at the failure of systems that are supposed to keep people safe, and we can sometimes feel helpless to do anything about it.

What we do know from research is that human connections are biggest factor to a healthy and happy life. Those symptoms of domestic violence, such as fear, anxiety and isolation can all be addressed through human connections and having people who love and care for you by your side.

In 2019, I founded the **StandbyU Foundation** to transform the way we address this complex social issue. Our charity's focus is on connections and our purpose very clear – the prevention of complex issues such as abuse, neglect, domestic violence and isolation through the mobilisation of family and friends. We know that it is families, not systems, that hold the key to addressing domestic violence because there is nothing you wouldn't do to keep someone you love safe – but we sometimes need help to spark that connection.

What we see often is those experiencing violence will not speak out due to the feeling of shame or fear. They don't want to be a nuisance or at times, when they have reached out, they are not believed.

Families also worry about someone they love but won't reach out because they don't know what to say, don't want to make things worse or don't want to stick their nose where it doesn't belong. This results in continued isolation – which is a major contributing factor to domestic violence. Families are not passive to the impacts and want to help, they just need a safe and practical way to do this. If isolation is the problem, connections are the antidote.

In a world first, **StandbyU** has developed an innovative way to support children and families at risk to ensure they can always access the help they need, all at the push of a button, bringing an immediate sense of safety and peace of mind to all.



The **StandbyU Shield** brings together all the people who would drop anything at any time



REAL ESTATE – DONE WRIGHT

Locals supporting locals

wrightwayrealty.com.au

Glenn Wright Licensed Real Estate Agent

Call 0408 120 866

“ True to his word - Glenn was professional, true to his word and friendly from the first conversation to the last. Glenn delivered as promised and we would have no hesitation in recommending Glenn for any and all Real Estate needs.”

- Harley & Kaz



m: 0408 120 866 e: glenn.wright@atrealty.com.au
wrightwayrealty.com.au

WRIGHT↑WAY
realty

@realty

VINCENTIA LAUNDRETTE

Burton Street Mall

Trading Hours:

6.30am – 6pm 7 Days

Extended hours in holiday periods



4441 6346

0448 586 029

SANCTUARY POINT PS

'Together We Succeed'

Address: 41 Idlewild Ave
SANCTUARY POINT NSW 2540



Phone: **02 4443 0546**
Email: sanctuarypt-p.school@det.nsw.edu.au

Enrolments for Kindergarten 2024 are now open



Scan the QR code
to fill in the
ONLINE
enrolment form
NOW

FOLLOW OUR SOCIALS FOR UPCOMING INFORMATION.

Stay up to date with all Kindergarten 2024 information by following:



Information sessions and official Kinder Transitions will happen towards the end of Term 3 and throughout Term 4 2023. WATCH THIS SPACE!



A SCREENSHOT using your mobile device of the following documents will be needed to complete the enrolment process:

If you would like assistance or access to a device please contact the school or come into our front office for our friendly staff to assist you.

Child's birth certificate



Immunisation Certificate



Accessible via MyGov app or website

Proof of Address

Any documentation that has the parents address (1 piece of evidence only)

Utility Bill OR Drivers Licence



Any additional medical or healthcare reports

to keep the person they love safe. The Shield is a tangible, measurable and evidence-based solution that can be set up within an hour. Together, we develop a safety plan based on the user's circumstances and support the chosen responders with strategies to safely mobilise. The plan is triggered at the push of a 4G powered device that sends live, one-way audio from the device into a conference room so all responders can listen in and discuss with each other the best way to intervene. If they do not feel confident, or if the person is in danger, responders can directly bring in emergency services to their call. Location is also sent from the device via SMS and email, so people know where to go, without the person at risk ever having to say a word.



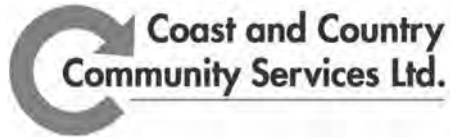
Recognising the impact of domestic violence across the community, **Sanctuary Point & Districts Community Bank** has partnered with **StandbyU** to sponsor 10 Shields to deploy across the Bay & Basin area. This partnership builds on our National Connected Community Partnership with Bendigo Bank, and we will be working closely with **Mission Australia** to identify those children and families at risk across the community. These amazing partnerships allow **StandbyU** to provide the Shields so those who need it never have to pay a cent for their safety.

If you or someone you love is at risk of domestic violence, please reach out, have that conversation to spark that connection, because, as we say at **StandbyU**, **Connections Change Lives**.

<https://www.standbyu.org.au/>

Contribute to About®

We'd love to hear from you! Please submit your articles by email to editor@aboutbayandbasin.org or by post to PO Box 180, Sanctuary Point NSW 2540 or contact us on 0478 607 829



COMMUNITY MINDED VOLUNTEERS NEEDED

Coast and Country Community Services is a community transport services provider that supports vulnerable people across Illawarra Shoalhaven, Young, Weddin and Bega. For us to continue in our valuable work in supporting our community with their transport needs, we are actively seeking community minded volunteers, with a drive to connect people and their communities.

The key roles to be filled by the right volunteers are drivers with licences including C and LR and vehicle assistants (no licence required for this role).

Be part of the great Australian volunteer force that has kept Australia strong, moving, and connected.

When volunteering for CCCSL, you will have access to a quality volunteer support program, including the reimbursement of out-of-pocket expenses and training.

For an information pack call our office team on 4423 6044



Staying active and healthy with Penny Lyn Daly

Falls Prevention and Postural Strength

All Classes
\$10

GentleFit Classes

Community Arts Cottage – 48 Edmund St, Sanctuary Point
8am Tuesday and Thursday – All welcome

7 Streamside Street, Woollamia
9.30am Tuesday & 9.30am Thursday – All welcome



BOOKINGS ARE ESSENTIAL
Levels and options for everyone

Phone today 0413 993 782

**FIONA
PHILLIPS MP**
Federal Member for Gilmore

I'm here to help with issues like Medicare, Centrelink, aged care and pensions, the NDIS, Veterans' Affairs and community grants. I can also arrange flags, and special birthday and anniversary messages.

Please let me know how I can help you.

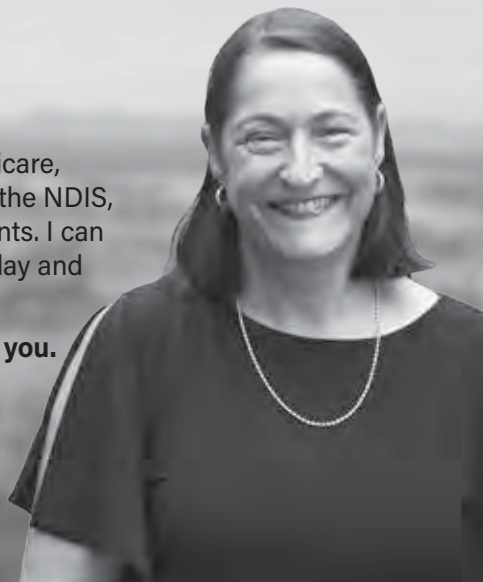
☎ (02) 4423 1782

✉ Fiona.Phillips.MP@aph.gov.au

🌐 fionaphillips.com.au

📍 3/59 Junction St Nowra NSW 2541 &
1/6-8 Orient St, Batemans Bay NSW 2536

Authorised by Fiona Phillips MP, Nowra.





SANCTUARY POINT COMMUNITY PRIDE

OUR LOCAL BUS SERVICE

Did you know that the local bus route got a facelift last year?

In August 2021, NSW Transport announced that the Greater Nowra area would receive more than 250 additional weekly bus services as part of their bus network improvements in the region. The improvements included more peak and weekend services, more direct routes, and longer operating hours to connect customers to where they need to go.

As part of this initiative, the Bay and Basin now have two Bus routes, the 102 and the 102X.

Bus 102 is a regular bus service that operates on a fixed route, connecting different neighbourhoods and key locations in the Bay and Basin area.

Bus 102X, on the other hand, is an express bus service that provides a faster and more direct route for commuters. This service has limited stops along its route.

Nowra Coaches operate both Bus 102 and 102X services, and you can get a copy of the timetable on their website (<http://www.nowracoaches.com.au/>), or you can get a timetable sent to you in the mail.

Apps make using the bus easier.

Sanctuary Point Community Pride Inc thanks our member John Svoboda for researching the following information.

Several apps are available to make it easier for passengers to track the arrival and departure times of Bus 102 and 102X. These apps provide real-time information about the buses' locations, estimated arrival times, and any delays or disruptions in the service.

Here are some popular apps that you can use to track these services:

- 1. Transport for NSW App** is the official app by the NSW Government that provides comprehensive information about public transportation services, including Bus 102 and 102X. It offers real-time updates, trip-planning tools, and alerts for any service disruptions.
- 2. TripView** is a widely used transport app that covers multiple cities, including the Bay and Basin area. It provides live transport information, including bus arrival times, departure schedules, and maps. It also has live navigation.
- 3. Moovit** is another public transit app that covers various cities worldwide, including the Bay and Basin area. It offers real-time bus tracking, step-by-step directions, and alerts for delays or service changes. Moovit also includes live navigation and saving favourite routes.

Using these apps, passengers can conveniently plan their journeys, track bus locations, and stay informed about any changes or disruptions to the Bus 102 and 102X services.

Pro Tips:

Using Apps with live navigation is excellent; it can tell you if the bus is running late or has already passed your stop!

When providing feedback to NSW Transport or local bus companies, you can give them a screenshot of the app as part of your feedback. Giving feedback is one way the community can ensure our local service runs on time and efficiently.

Sources:

<https://transportnsw.info/news/2022/better-bus-services-for-greater-nowra>

<http://www.nowracoaches.com.au> ■



MUCKING IN

CLIFTON COMMUNITY FOOD GARDEN

Hours: Tues and Sat 9 to 12; Fri 2 to 5pm – Contributed by Colleen McIntyre

Our weather pattern has been playing tricks again this year, the end of autumn felt like winter and then the beginning of winter replicated the beginning of autumn. Very unsettled!! As the old saying goes *"as the days get longer, the cold gets stronger"*. Once we have passed the shortest day, 21st June, the real winter sets in to catch us off guard and July and August have their own surprises.

However, the cabbages and cauliflowers are thriving and the cold nights and warm sunny days are perfect for their growth. The garlic has been an exciting surprise, germinating very quickly and sprouting away..... every clove! A forest of garlic plants is filling Bed 7, and our fingers are crossed for a delicious bounty here in October.

The garden beds allocated for potatoes have been enriched with natural organic fertilizer, added in trenches between the rows where the spuds are to be planted.

After a resting period, the worms and microorganisms have had time to do their work in the soil where the seed potatoes were planted. Ongoing protection from the bandicoots, rats and insects has been maintained in every bed, with wire and netting covering the beds.

The construction team have been hard at work with renovations to our hut, adding a new roof to extend the existing awning at the rear. All of the former brick paved area was removed and the bricks cleaned by the members.

A huge dirty job, embraced with mixed feelings and a certain amount of complaint. Never the less, it was achieved with persistence and jovial team banter, so typically Aussie in a friendly group.

Our wonderful male members prepared and reset the patio area and re-laid all the bricks

adding more recently donated new bricks and pavers to the extra space. A job well done and congratulations to all! This undercover extension provides a much needed larger space for social gatherings and the planned workshops.

We tried it out on Friday evening early in June with a barbeque. We all enjoyed salads and desserts, a fire pit, toasted marshmallows, fellowship and laughter and all were home by 8.30pm, perfect! It was a practise run for our anniversary in October/November to celebrate a decade since the gardens simple beginnings.

Our next Open Morning for fundraising will be on July 15th from 10am to 12 noon sharp, the pickles, chutney and jams stall will be restocked by our diligent cooks. Excess vegetables will be displayed for purchase and various varieties of donated plants will be available.

Our members pass on their excess plants as their gardens are refurbished. It is always on the third Saturday of the month and the flags will fly at the front of the garden to welcome visitors. Members will be on hand to chat. We look forward to seeing lots of visitors on these open mornings.



APPLE (malus)

Brad Wilson – Herbalist

An Apple a Day.....

Feeling sluggish? Clogged up? Ever wish you could get out a new broom and take it to task on your innards? You know, give the whole place a good sweep out and a vacuum. Well here's some good news. You can, with cheap little items called apples. There's a good reason they call them *"nature's brooms"*. Apples really do

perform a clean sweep and keep you healthy, as any doctor will attest.

The secret is fibre. Apples have lots of it. It's the fibre that does all the heavy lifting. Once consumed, an apple doesn't stick around. It's on the move. Some experts estimate the timeline between entry and imminent exit is only 85 minutes. Stewed apple possibly less.

If you are one of those retentive types, an apple at bedtime could make constipation a thing of the past.



As for nutrition, the modern apple (7,500 varieties and counting) is a far cry from the original wild crab apple. It is bigger and sweeter for a start; 10% or so being pure sugar. It's also rich in vitamins, minerals and "phytochemicals" (whatever they are). Being so crispy and crunchy means you can't eat too many at once – normally. It's only when it's loaded into hot apple pies with sugar and cinnamon that it becomes a strain on the system. Oh what the heck..... pass the cream!

And speaking of apples, let's not forget apple cider, that bubbly little beverage that gladdened the heart of many a rustic. In days gone by every farmhouse would have a cider fest. Come autumn the tart cider varieties (with names like "slack ma girdle" and "brown snout") would be rounded up and taken to the pound house.

It was all hands to the windlass as a cubic yard of apples and straw (called the "cheese") was brutally crushed under a straining wooden screw press.

After 4 months in oak barrels, the juice became a golden and highly alcoholic sweet drink – nectar to those thirsty farmhands and local layabouts. It was traditionally touted as a remedy for rheumatism, kidney stones and gout (though surely more likely to cause gout than remedy it?). Anyway, bottoms up!




Machelp
Apple Mac Sales & Service
 15+ years serving Apple Mac users throughout the Shoalhaven.
 • New Macs & Apple products
 • Repairs, upgrades, data recovery
Phone Dave 0411 572 725

Garden and Home Plus

- ☑ Lawn mowing, edging, hedging, pruning, planting
- ☑ Handyman
- ☑ High Water Pressure Cleaning
- ☑ Soft Landscaping



LARGE PROPERTY & ACREAGE SPECIALIST

WINTER SPECIAL
25% OFF
 all gardening & handyman work

Call to arrange a FREE Quote
0406 410 437
 e: gardenandhomeplus@gmail.com

HAVING A DE-CLUTTER/ CLEAN-UP

Donations of goods
wanted for

CHARITY GARAGE SALE

to be held on

SAT 30th SEPT 2023

In aid of Basin View Masonic Village
130 The Wool Road, Basin View.

Donations of furniture, household
goods, plants etc.

Please note: we cannot accept
clothing, large wall units,
televisions or computers.

Please phone 4443 2073



New Zumba Gold

The class that's designed
for seniors

Have fun while getting active, improving balance
and looking after your health!

I am a qualified Personal Trainer, specialising in aging
- you can be confident you are in good hands.

NOW IS THE TIME TO FEEL GOOD!

Try it for FREE contact **Jaye 0401 200 720**
<http://www.jayecartwright.zumba.com>



Specialising in

Re-Roofing Colourbond & Tile

Gutters and Downpipes

Re-bed and Point Ridge Caps

All Other Roofing Repairs

Call Trevor 0476 924 764

Lic 259609C ABN 41 766 033 906



DAVLIN HEALTH
SHOALHAVEN

We help women with bladder
leakage and men with erectile
dysfunction regain their
self-confidence and we give
them back their freedom.

At last, now on the NSW South Coast, a clinic that specialises in bladder
leakage, erectile dysfunction and getting up at night more than once
plus other pelvic health issues in a totally non-invasive way.

Davlin Health has the revolutionary Emsella chair that uses
electromagnetic energy to fast-track pelvic floor health. All you
have to do is sit, fully clothed for 28 minutes and you get the
equivalent of 11,200 pelvic floor exercises.

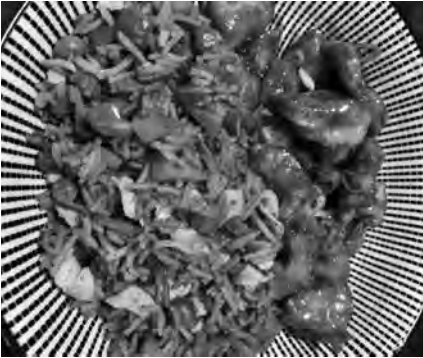
A full treatment is 6 sessions – twice a week for 3 weeks.



Book a free trial now on www.Davlinhealth.com.au

Phone us on 0498 111 996 or

Email us – Linda@davlinhealth.com.au.



Orange Chicken

courtesy of  Australian Home Cooks

INGREDIENTS

- 250 grams chicken breast/thigh meat, cut into bite size pieces
- 1 egg
- salt as per needed
- ½ tsp black pepper, ground
- 1 tsp soy sauce
- ¼ cup cornflour
- 1/3 cup plain flour
- water as per needed to make batter

For Sauce

- 2 tbsp orange juice
- ½ cup brown sugar
- 2 tbsp rice vinegar/white distilled vinegar
- 2 tbsp soy sauce
- ½ tsp paprika
- ½ tsp garlic, minced
- ½ tsp ginger, minced
- salt as per needed
- 1 tbsp orange zest
- ½ tbsp cornflour mixed with 1 tbsp water

Extra

- spring onion greens for garnish
- oil to fry.

METHOD

1. Marinate chicken with egg, salt, cornflour, flour, soy sauce & ground pepper.
2. Add water to this little by little to make the batter enough to be smooth and coat the chicken pieces. Do not make this thick or runny.
3. Heat oil in a pan, enough to submerge the chicken. When hot, slowly drop the chicken pieces in batches and fry till golden brown.
4. Drain them on paper towel and keep aside.
5. In a mixing bowl add the ingredients for sauce. Mix well till combined.
6. In a pan, add the sauce mix and let it come to a boil. Add chicken pieces to sauce mix and let them cook till chicken is coated well with sauce and thick.
7. Switch off the flame and let it sit for a few minutes. Toss further and garnish with spring onions
8. Serve while hot with noodles/fried rice/sticky rice.

The reaction is instant – as soon as the sound of excited little voices float through the window, everyone in the room is wearing the same smile. It's Friday at the Sanctuary Point Youth & Community Centre, and for the last two months a group of three and four year olds from The Basin Pre-School next door have been walking over to be with some special older friends.

For many of the seniors participating in the BCR Communities intergenerational sessions it has been decades since they have experienced the pure joy that comes from spending time with pre-schoolers.

Four year olds are masters of living in the moment, and the seniors are finding any aches, pains or worries are forgotten as they absorb themselves in colouring-in, playing games, blowing bubbles, singing nursery rhymes and having some very cute conversations.

71-year-old Ellen Deutschbein said the sessions were something she looks forward to every week. *"The kids were a little shy in the beginning but now they are coming out of their shells and they are just beautiful - I have always loved being around kids"* Ellen said. *"I've only been coming to the BCR Communities social groups for a few months and I'm so glad I joined. It's scary joining when you don't know anyone but now I just love it. It's great being with the kids but I also really enjoy talking with other people my age who are experiencing similar things."*

The kids are also benefiting from the intergenerational sessions, receiving the kind of one to one attention that is usually the reserve of grandparents. They have a group of grown-ups who take delight in their company, are keen to listen to their stories and ideas, and who cheer them on as they try new activities.

If you would like to find out more about the BCR Communities Social Groups phone 1300 222 748, email at info@BCRcommunities.com or visit our website www.bcrcommunities.com/social-groups.



SHOALHAVEN INDIAN MYNA ACTION GROUP

This facebook page has been setup for the community to share information, educate and share ideas on this pesty bird, the "Flying Rat" Indian Myna which competes and harm's our native birdlife.

Join the group for some valuable information to help our local wildlife.



We meet at Jervis Bay Baptist Church school room, behind the Church, cnr Wool Rd & St George Ave, Vincentia, on 1st and 3rd Thursdays of the month, from 9.30am to 1pm. **Phone Karen 4443 5239.**

OLD AND NEW RESIDENTS

Are you new to our beautiful bay & basin area or are you a long time resident? Would you like to join a friendly and happy group of people? **Monday 9.15am – Indoor Bowls (carpet).** You will be warmly welcomed. Morning tea provided (bring cup) and your first day is free. Join a happy mob on Monday morning.

Ph: Pat 0421 480 702 or 0429 610 109



We meet every 4th Wednesday of the month 1pm at the Holy Spirit Church Hall, St George Ave, Vincentia. Become involved in our disaster relief and other activities. We also have a singing group which practises Wednesday mornings, and perform at nursing homes and day care centres and the odd bit of busking throughout the year.

Pres. Pat Pilkington 0491 483 142 or Elaine Ladyga – Singing Group 4441 5921.

Shoalhaven Family History Society Inc.

The Old School 888 Greenwell Pt Rd, Pyree. Open every Sun 10am – 4pm and 1st & 2nd Thurs each month 10am – 4pm
www.shoalhaven.net.au/~sfhs LIKE us on 



North Shoalhaven Meals on Wheels – Jervis Bay Service

North Shoalhaven Meals on Wheels-Jervis Bay Service is a not-for-profit organisation that provides meals to older people living in their own homes in the Bay and Basin area. We provide over 16,000 meals, soup and desserts per year but to do this we need volunteers.

We need cooks or those that want to help in the kitchen, and delivery people for those that want to get out of the kitchen and help deliver meals.

We operate Mon, Wed and Friday from our Huskisson kitchen, with great flexibility in volunteering.

Please call the kitchen 4441 7845 if no answer please leave a message so we can get back to you OR call the Main Office on 4422 5111.

You could also visit our website and fill in forms online at www.northshoalhavenmeals.org.au



SANCTUARY POINT COMMUNITY PRIDE

President Christine Percy 0409 363 243
Secretary Gwen Price 0419 492 348

PO Box 99 Sanctuary Point NSW 2540
sanctuarypointcommunitypride@gmail.com

2023 MEETING DATES

Friday 28th July	10am–12 noon
Tuesday 29th Aug	6.30pm–8.30pm
Friday 29th Sept	10am–12 noon
Tuesday 24th Oct*	6.30pm–8.30pm
Friday 24th Nov	10am–12 noon

* The Annual General Meeting (AGM) will be held on 24th October 2023 commencing at 6.30pm. The October monthly meeting will follow the AGM.

SHOALHAVEN CITY PIPES & DRUMS

We meet each Monday – 7pm at
The Exservos, 157 Junction St, Nowra.
All ages welcome.
Phone Gladys 0432 680 481



Huskisson Woollamia Community Voice

Community Consultative Body (CCB) - SCC
PO Box 65, Huskisson 2540 – 0408 672 087
e: exec@hwcv.org.au w: www.hwcv.org.au

Meet bi monthly, 2nd Monday from 7pm at
the Huskisson Community Centre, Dent St.




VOLUNTEERS NEEDED

Do you have a particular interest
and would like to help Basin View
Masonic Village?

We need your help with activities
such as bus trips, craft, exercise
and various entertainment events. Just a
few hours of your time occasionally will put
a smile on the faces of our residents.

**Contact Michelle or Jo on 4443 5034
during office hours.**

Shoalhaven Beekeepers Assoc Inc.

meet West Street Community
Centre, West St, Nowra on the
3rd Wed (ex. Dec 2nd Wed)
at 5.30pm for cuppa, meeting starts 6pm
sharp, guest speakers most months. For
more info email [shoalhavenbeekeepers@
gmail.com](mailto:shoalhavenbeekeepers@gmail.com) or 



We are looking for Volunteer bus drivers.

LR Drivers Licence required. One
morning or afternoon per month.
**Call Michelle at Basin View Masonic
Village on 4443 5034**

Tennis: Ladies Doubles Social tennis only – no competition

Ladies come along for some exercise
& social activity at
The Country Club, StGB.

**We need more players for Wed AM
Ph: 0409 920 878**



ST GEORGES BASIN VIEW CLUB

We are an arm of The Smith Family. We
provide friendship for women in the area as
well as advocating on important issues.

Our main aim is to provide financial,
emotional and educational support to
disadvantaged Australian students. We do
this through the Learning for Life Program.

We meet for lunch on the 3rd Friday of the
month at The Country Club, St Georges
Basin. We host a variety of social outings
to raise funds to support our sponsored
students.

Call Robynne Daniels 0418 630 877



VINCENTIA RURAL FIRE BRIGADE

next door to Leisure Centre, Vincentia
**We are seeking community minded
volunteers. Contact our Captain on
4401 1750**

NOWRA & DISTRICTS TOTALLY & PERMANENTLY INCAPACITATED (TPI) SOCIAL & WELFARE CLUB

Are you a Military TPI looking for social
interaction??? Come join us!

We are seeking new members. We hold our
meetings at the Nowra Veterans Wellbeing
Centre, 124 Wallace Street, Nowra, on the
3rd Tuesday of each month at 11am as well
as having social outings and lunches.

**For more information contact Secretary
Leanne Wehmeier on 0419 464 313.**

**JUSTICES OF THE PEACE
Volunteer Help Desk**

We are available to help to answer your questions at The Office of the Federal Member for Gilmore, Suite 3, 59 Junction St, Nowra (around corner from PO). **For more info or to join the local J.P. Branch call Brenda 0407 065 031**

Shoalhaven Transition a worldwide grassroots movement, transitioning communities towards a more sustainable future.
Meets monthly 4443 4713.



BECOME A MEMBER AND HELP ANIMALS IN YOUR LOCAL AREA.

We are looking for passionate animal lovers to join our dedicated group of volunteers to help care for local pets in need, and assist with our various community support and desexing programs.

Contact AWL NSW Shoalhaven Branch on 0429 429 885 or email awlshoalhaven@awlsw.com.au.

You can also find us on

Local Markets

Berry Country Fair 1st Sun (except Feb held 2nd Sun) || Berry Showground, Alexandra St || 4464 1476

Clifton Community Food Garden Fundraiser
3rd Sat || 10am - 12 noon || at the garden Clifton Street, Sanctuary Point || 0412 793 319

Huskisson Markets 2nd Sun || Huskisson Sports Ground || 0409 740 704 (BH)

Jervis Bay Maritime Museum Markets
1st Sat || 10am-3pm || Dent St, Huskisson || Ph 4441 5675
|| e: markets@jbrmm.asn.au

Milton Village Showground Markets 1st Sat PLUS Long Weekends & Easter || Milton Showgrounds, Croobyar Rd, Milton || miltonvillagemarkets@gmail.com

Pyree Village Arts & Craft Markets 4th Sun || Shoalhaven Potters Workshop, Greenwell Pt Rd, Pyree || 4443 7312

Royal Coastal Patrol Market Ulladulla 2nd Sun || Ulladulla Harbour & Wharf, Wason St, Ulladulla || 4455 3403

Sussex Inlet Flea Market 2nd Sat || Uniting Church Hall, Jacobs Dr, Sussex Inlet || 4441 1546

Tomerong Village Market 3rd Sat || 8am-1.30pm || School of Arts, 360 Hawken Rd, Tomerong || email: tomerongmarket@gmail.com || www.tomeronghall.com || or find us on or

Rural Fire Services

IN AN EMERGENCY CALL 000

We have 7 Brigades over two groups in our area.

Fire Control 4424 4424



Basin View, Huskisson,
St Georges Basin, Sussex Inlet,
Tomerong, Vincentia and Wandandian.
New members always welcome.

**EMERGENCY
CALL 000**

Basin View	Denise Fabreschi	0412 780 899
Huskisson	Cpt Sanna Reeves	0408 480 424
St Georges Basin	Cpt Michelle Thornley	0427 288 340
Sussex Inlet	Adam Harris	0409 326 660
Tomerong	Doug Schutz	4443 4600
Vincentia	Captain	4401 1750
Wandandian	Brian Edwards	0488 752 489

Weekly Meetings

1st St Georges Basin Scout Group ■ Tasman Rd Scout Hall, SGB ■ Tue 5pm Joey Scouts; 6.30pm Cub Scouts ■ Wed 6pm Scouts ■ Mon 6.30pm Venturers ■ Paula 0400 674 525

Al Anon - Huskisson ■ Thu 10am ■ Huskisson Community Centre Dent Street, Huskisson

Alcohol and Drug Treatment ■ Lives Lived Well ■ Nana Muru (Better Road) ■ Free day rehabilitation program runs over 6 weeks in bay and basin (non-residential) ■ Mobile withdrawal program for residents of Nowra and bay and basin ■ 18 yrs and over ■ 1300 727 957 ■ self refer via website www.liveslivedwell.org.au

Basin Radio Controlled Yacht Group ■ Jetty at Island Pt Rd, SGB ■ Tue & Sat 9.30am ■ Racing starts 10am ■ Tony Blackmore 0427 450 278 or Malcolm Griffiths 0431 094 520

Basin Track Bushcare ■ Wed 9am ■ <https://www.shoalhaven.nsw.gov.au/For-Residents/Our-Environment/Bushcare> ■ michael.smith@shoalhaven.nsw.gov.au ■ 0434 691 367

Bay & Basin Art Group ■ Community Centre, Lorallyn Ave StGB ■ Mon 9.30am-12.30pm ■ Over 50s ■ Lyn 4443 2848 or Audrey 4443 4340

Bay & Basin Bombers Junior AFL Club ■ Leisure Centre, Wood Rd, Ventincia ■ Thu 4.30-5.30pm ■ Girls & Boys aged 6-17 ■ Jeff 0420 749 402 or Chris 0403 047 659 ■ www.bombers.net.au

Bay & Basin Bush Potters ■ 48 Edmund St, Sanctuary Point ■ Mon 9am-2pm ■ Call in and have a look Mondays between 9am-2pm if interested

Beginners Belly Dance Class ■ Huskisson Community Centre ■ Wed 4.30-5.30pm ■ Ph Mimi 0416 204 801

Belly Fit ■ Huskisson Community Centre ■ Tue 4.30-5.30pm ■ Ph Mimi 0416 204 801

Clifton Community Food Garden Working Bees held 3 times a week ■ Daylight Saving Hours Tue 9am-12noon ■ Fri 3-6pm ■ Sat 9am-12noon ■ Non Daylight Saving Hours Tue 9am-12noon ■ Fri 2-5pm ■ Sat 9am-12noon ■ Jeff 0437 333 042

Collingwood Reserve Park Care Group ■ meet in reserve opposite Basin View Volunteer Rural Fire Brigade Shed ■ Mon 8.30am ■

CWA Jervis Bay Day ■ Huskisson Community Centre, Dent St ■ Tue 10am for craft, cuppa & chat ■ 3rd Tue General Meeting ■ Visitors welcomed ■ Pres. Emily Ede 0438 208 754

Dancing ■ Bomaderry RSL Club ■ Wed 7pm ■ permanent dance floor R'n'R, swing, country 2 step, rockabilly ■ Born to Boogie 0409 998 868

Erowal Bay Tennis Club ■ Grandview St., Erowal Bay ■ Competition & general enquiries John Dick Pres. 4443 3459 ■ Tuesday morning & Thursday afternoon social tennis Ian Lambert Vice Pres 0407 672 161 ■ Monday morning social tennis Beth Jarvis 0428 369 209 ■ Private court hire John Hunt 0447 225 044

Friendship Club ■ Husky Church Op Shop, 53 Hawke St ■ Thu 9.30-11.30am ■ All welcome.

Heart Foundation Walking Group ■ Paradise Beach Sanctuary Point ■ Mon 9am ■ Sue Randles 0427 286 719

Huskidrumming ■ Facilitated djembe drumming circle ■ Huskisson Community Centre ■ Sat 10.30am ■ All welcome ■ e: huskidrumming@gmail.com

Huskisson Girl Guides ■ During school terms ■ Huskisson Scout/Guide Hall, Kiola St (near Bowling Club) ■ Tue 5-6.30pm Junior Guides 6-9yrs ■ Wed 4.30-6.30pm Guides & Senior Guides 10-16 yrs ■ Parents and Friends Support Group 3rd Wed ■ Liesel Turnbull 4443 6007/0402 837 777

Husky Social Carpet Bowls ■ Huskisson Community Centre ■ Mon 9am-1.30pm ■ morning tea provided bring your lunch ■ Ph 0427 275 552 or 0421 480 702

JB Walkers and Talkers ■ Meet Holden St Boat Ramp, Ventincia ■ Pram friendly walking group ■ Fri 10.30am ■ e: lanaburkey@gmail.com

Jervis Bay Bridge Club ■ Huskisson Community Centre, Dent St, Huskisson ■ Fri 9.30am ■ All Bridge players welcome Ph 0421 332 991 or 0430 013 946

Jervis Bay Community & Men's Shed ■ Thu 9am-12pm ■ New members welcome both men & women ■ Colin Loudon 0412 347 322

Jervis Bay & Districts Activities Group ■ Fri 9am-1pm ■ Men & Women welcome ■ Colin Loudon 0412 347 322

Jervis Bay Paddle Group ■ weekly paddle group for kayakers ■ check  Jervis Bay Paddle Group page for schedule

Jervis Bay Physical Culture Club ■ Classes held Ventincia Primary School & StGB Community Hall ■ www.jervisbayphysie.com.au ■ e: jervisbayphysie@gmail.com ■ Jaclyn 0422 458 485 or Amie 0405 438 057

Jervis Bay Wobbegongs Winter Swimming Club ■ Huskisson Beach south end ■ Racing season Sun 8.30am between 1st May & 30th Sept each year ■ Swim & Chinwag Mon-Fri 7.30am to 8am all year long ■ <http://wobbegongs.weebly.com/> or 

**OUR COURTESY BUS RUNS
7 DAYS / WEEK FROM 11AM-LATE**

Call Reception to book (02) 4443 0666

THE COUNTRY CLUB
St Georges Basin

WHAT'S ON JULY

MEMBER LUNCH SPECIALS
SEE SPECIALS BOARD FOR DETAILS

AVAILABLE MONDAY - FRIDAY
(EXCLUDING PUBLIC HOLDS.)

ONLY \$15
(\$18 VISITORS)

On Point Kitchen
ST GEORGES BASIN

RIPPER RAFFLE
Thursdays

Over \$3,000 in Prizes to be WON!

WIN! Tickets on sale 4:30pm
Draw starts 6:00pm

Tickets \$1 Each
Buy \$10 or more &
Get **DOUBLE TICKETS!**

SATURDAY SEAFOOD RAFFLE

\$1,200 WORTH OF SEAFOOD TO BE WON
(INCLUDING 2 X MEAT TRAYS!)

TICKETS ON SALE FROM 4:30PM AT THE BAR. DRAW STARTS 6:30PM.
TICKETS JUST \$1 EACH. EVERY 10 PURCHASED EARNS A BONUS 10 NUMBERS!

AVE LIVE PROWRESTLING

OVER THE TOP ROPE

SATURDAY 8TH JULY 2023

ALL Children MUST be accompanied by a paying Adult. Children are to be supervised at all times and be seated in immediate areas of The Country Club.
The Adult Supervisor will provide VIP Single Seating, Family and General Seating.
VIP Seating - Adults \$40 Children 4 - 18yrs \$25 Toddler's under 3 years just LAID FREE!
VIP Tickets include - Meat and Great. Photo in Ring with Weather Station with your own camera. Signed Poster.
General Seating \$40 - \$100

DON'T CHANGE
ULTIMATE INKS

Good Times TOUR!

FRIDAY 14 JULY
THE COUNTRY CLUB
ST GEORGES BASIN NSW

30 TRAYS

Tickets Just \$1 Each

SUNDAY MEAT MARKET

On Sale 1:30pm
Draw Starts 3pm

**XMAS IN JULY
HAM RAFFLE**
TUE 25TH JULY

50 X HALF HAMS
TICKETS \$1 EACH, BUY \$10 ON ONE SHEET AND GET \$10 WORTH FREE

TICKETS ON SALE 4:30PM
DRAW STARTS 6:00PM

THE COUNTRY CLUB
St Georges Basin

We Sincerely Thank You
For Making Your Club,
The Country Club
Bob Proudfoot - President

THE COUNTRY CLUB
St Georges Basin

Sat 1st	Seafood Raffle - Tickets from 4pm Draw starts 5pm \$5,000 Members Badge Draw Starts from 6:00pm Free Live Entertainment Last Chance Honey 7pm - 11pm
Sun 2nd	Poker - Sunday Poker Rego from 1pm, starts 2pm Sunday Meat Market Tickets from 1:30pm, Draw 3pm Free Live Entertainment Backlash Duo 4pm-8pm
Mon 3rd	Bingo - Morning 10-12pm Afternoon 12:45 - 3pm \$15 Chinese Mondays* On Point Kitchen from 5pm Poker Rego from 5:30pm, starts 6:30pm
Tue 4th	Cash Housie Starts 10:30am \$15 Burger & Beer Tuesdays* On Point Kitchen from 5pm Bingo Starts 6:30pm Trivia - from 6:30pm
Wed 5th	Bingo - Starts 10:30am \$15 Steak Night* On Point Kitchen from 5pm Wednesday Mega Raffle Tickets from 4:30pm, Draw 6pm Sub Club Raffle - Draw 6:30pm
Thu 6th	\$15 Parmageddon Thursdays* On Point Kitchen from 5pm Ripper Raffle - Tickets from 4:30pm Draw 6pm Junior Rugby League Raffle Draw 6:30pm
Fri 7th	Fantastic Friday Cash Draw Drawn 6:30pm, 7:30pm, 8:30pm & 9:30pm Snooker Club Raffle Drawn 7:30pm

Sat 8th	Seafood Raffle - Tickets from 5pm Draw starts 6pm Free Live Entertainment - Monkey Business 7pm - 11pm AWE Live Wrestling Auditorium from 8pm (tickets required)
Sun 9th	Poker - Sunday Poker Rego from 1pm, starts 2pm Sunday Meat Market Tickets from 1:30pm, Draw 3pm Free Live Entertainment Platinum Duo 4pm-8pm
Mon 10th	Bingo - Morning 10-12pm Afternoon 12:45 - 3pm \$15 Chinese Mondays* On Point Kitchen from 5pm Poker Rego from 5:30pm, starts 6:30pm
Tue 11th	Cash Housie Starts 10:30am \$15 Burger & Beer Tuesdays* On Point Kitchen from 5pm Bingo Starts 6:30pm Trivia - from 6:30pm
Wed 12th	Bingo - Starts 10:30am \$15 Steak Night* On Point Kitchen from 5pm Wednesday Mega Raffle Tickets from 4:30pm, Draw 6pm Sub Club Raffle - Draw 6:30pm State of Origin Game 3 Live and loud from 8pm
Thu 13th	\$15 Parmageddon Thursdays* On Point Kitchen from 5pm Ripper Raffle - Tickets from 4:30pm Draw 6pm Junior Rugby League Raffle Draw 6:30pm
Fri 14th	Fantastic Friday Cash Draw Drawn 6:30pm, 7:30pm, 8:30pm & 9:30pm Snooker Club Raffle Drawn 7:30pm Don't Change INXS Show Auditorium from 8pm (tickets required)

Sat 15th	Seafood Raffle - Tickets from 5pm Draw starts 6pm Free Live Entertainment Mick on Wheels 7pm - 11pm
Sun 16th	Poker - Sunday Poker Rego from 1pm, starts 2pm Sunday Meat Market Tickets from 1:30pm, Draw 3pm Free Live Entertainment Rockaholics 4pm-8pm
Mon 17th	Bingo - Morning 10-12pm Afternoon 12:45 - 3pm \$15 Chinese Mondays* On Point Kitchen from 5pm Poker Rego from 5:30pm, starts 6:30pm
Tue 18th	Cash Housie Starts 10:30am \$15 Burger & Beer Tuesdays* On Point Kitchen from 5pm Bingo Starts 6:30pm Trivia - from 6:30pm
Wed 19th	Bingo - Starts 10:30am \$15 Steak Night* On Point Kitchen from 5pm Wednesday Mega Raffle Tickets from 4:30pm, Draw 6pm Sub Club Raffle - Draw 6:30pm
Thu 20th	\$15 Parmageddon Thursdays* On Point Kitchen from 5pm Ripper Raffle - Tickets from 4:30pm Draw 6pm Junior Rugby League Raffle Draw 6:30pm
Fri 21st	Fantastic Friday Cash Draw Drawn 6:30pm, 7:30pm, 8:30pm & 9:30pm Snooker Club Raffle Drawn 7:30pm

Sat 22nd	Seafood Raffle - Tickets from 5pm Draw starts 6pm Free Live Entertainment Hits Central 7pm - 11pm
Sun 23rd	Poker - Sunday Poker Rego from 1pm, starts 2pm Sunday Meat Market Tickets from 1:30pm, Draw 3pm Free Live Entertainment Joe Gatehau 4pm-8pm
Mon 24th	Bingo - Morning 10-12pm Afternoon 12:45 - 3pm \$15 Chinese Mondays* On Point Kitchen from 5pm Poker Rego from 5:30pm, starts 6:30pm
Tue 25th	Cash Housie Starts 10:30am \$15 Burger & Beer Tuesdays* On Point Kitchen from 5pm Xmas in July Ham Raffle Tickets 4:30pm Draw 6pm Bingo Starts 6:30pm Trivia - Straight after ham raffle
Wed 26th	Bingo - Starts 10:30am \$15 Steak Night* On Point Kitchen from 5pm Wednesday Mega Raffle Tickets from 4:30pm, Draw 6pm Sub Club Raffle - Draw 6:30pm
Thu 27th	\$15 Parmageddon Thursdays* On Point Kitchen from 5pm Ripper Raffle - Tickets from 4:30pm Draw 6pm Junior Rugby League Raffle Draw 6:30pm
Fri 28th	Fantastic Friday Cash Draw Drawn 6:30pm, 7:30pm, 8:30pm & 9:30pm Snooker Club Raffle Drawn 7:30pm

Sat 29th	Monthly Special Breakfast 9am-11am Cash Housie - Call starts 1pm Seafood Raffle - Tickets from 5pm Draw starts 6pm Free Live Entertainment Raven 7pm - 11pm
Sun 30th	Poker - Sunday Poker Rego from 1pm, starts 2pm Sunday Meat Market Tickets from 1:30pm, Draw 3pm Free Live Entertainment William Wallace 4pm-8pm
Mon 31st	Bingo - Morning 10-12pm Afternoon 12:45 - 3pm \$15 Chinese Mondays* On Point Kitchen from 5pm Poker Rego from 5:30pm, starts 6:30pm

WHAT'S ON JULY



What's On...What's On...What's On...What's On...What's On...What's On

Karate ■ Sanct Pt Community Centre, 18 Sanct Pt Rd ■ Tue & Fri ■ 5.30pm

Line Dancing ■ Tue 10am-1pm SGB Community Hall, Meriton St, StGB ■ Mon 6-8.30pm Shoalhaven Heads Bowling Club ■ Wed 10am-1pm Bomaderry Community Hall ■ Thurs 6-8pm StGB Community Hall ■ Laurel 0408 184 984

Mannahouse Youth ■ Fri 7pm StGB Community Centre, 21 Meriton St, StGB ■ www.mannahouseyouth.org

MSCARC Inc. ■ (Mid South Coast Amateur Radio Club Inc.) ■ Wed from 7.30-9.30pm on air ■ New members always welcome ■ Ken 4403 0599

Nowra Healing Rooms ■ 12 Tarawara St, Bomaderry ■ Open Wed 10am-12pm, Thu 7-9pm ■ 0459 046 084 ■ No appointment necessary & no charge ■ www.healingrooms.com.au

Nowra Quilters ■ North Nowra Community Centre, 7 Hood Cl, Nth Nowra ■ Tue 9am-1pm ■ New members welcome ■ e: alex@themwarners.com

Nowra Town Band ■ 174 Kinghorne St, Nowra ■ Mon 5.30-6.30pm for Training Band & 7-9pm for senior practice ■ Private lessons available in brass and percussion ■ Hall 4422 0807 or Ross 4443 5745/0488 056 196

Raised Voices Community Choir SATB ■ Jervis Bay Baptist Church ■ Tue 7pm ■ New Members welcome ■ Ph Christine 4443 7665

Scottish Country Dancing ■ Thu 2pm-3.30pm Senior Citizens Hall, Berry St, Nowra ■ Tue 7.30-9.30pm Presbyterian Church Hall, Kinghorne St, Nowra ■ Beginners welcome ■ Heather 4441 5496

Shoalhaven City Pipes & Drums ■ Mon 7pm The Exservos, 157 Junction St, Nowra ■ Ph Gladys 0432 680 481

Shoalhaven Concert Band ■ Junior, Concert and Stage band ■ Nowra School of Arts Annex, Berry St Nowra ■ Tue 6-9.30pm ■ Richard 0417 462 885 or see 

Shoalhaven Ex-Servicemens Dance Club 157 Junction St, Nowra ■ Wed 7-9.30pm ■ Social dancing inc. modern ballroom, new vogue, sequence, latin, rock n roll ■ visitors welcome ■ Ph Stuart 0413 051 003

Shoalhaven Rock N Roll Group ■ SGB Country Club ■ Mon 7pm ■ John 0411 120 042 or Linda 4443 3364 ■ www.shoalhavenrockandroll.org.au

Sing Australia, Vincentia ■ Community Singing Group ■ Jervis Bay Baptist Church, The Wool Rd, Vincentia ■ Thu 7-9pm ■ New members welcome ■ Jenny 4441 7713 ■ www.singaustralia.com.au

Smith Bay Bushcare Group ■ Basin View ■ Fri for 2-3 hours ■ Fran 4443 6324


Social Scrabble ■ The Country Club StGB ■ Thu 1-4pm ■ New players welcome ■ Ph Anne 0410 012 642 or Emily 0438 208 754

St Georges Basin Health & Com Transport Serv ■ Mon & Wed Local Health ■ Tue, Thu & Fri Nowra Area Health ■ 4423 6044 for bookings Mon-Fri 9am-12pm, 1-3pm

St Georges Basin Little Athletics ■ Sports Grounds, Larmer Ave, Sanctuary Point ■ Registration Ph Tracy 0423 846 194 or Michelle 0412 656 206

St Georges Basin Senior Citizens Club ■ Mon 9am-12 noon Art (Painting), StGB Comm. Centre, 21 Meriton St, StGB ■ Thu from 9am Bowls-Darts-Euchre, The Country Club — St Georges Basin ■ Ph Margaret 4443 6031

St Georges Basin Senior Citizens Walking Group ■ Alternate Fridays 9am onwards, ph Helen 0412 215 855, Colleen 0423 233 594

St Georges Basin SES Unit ■ 41 Tasman Rd, StGB ■ Wed 6.30pm ■ for training, providing advice to members of the community on storm/flood preparedness, new volunteer enquiries welcomed ■  NSWSESSGB

Sussex Inlet Computer Club ■ Sussex Inlet RSL Club ■ 2nd, 3rd & 4th Tue 10am-noon ■ All welcome

Sussex Inlet/Shoalhaven Square Dance ■ Wandandian Community Ctr, Princes Hwy ■ 7-10pm ■ 4443 4436

Table Tennis ■ Scout Hall, Tasman Rd, SGB ■ Wed 2-4pm ■ Adam 0401 020 827 please leave a message

Tennis ■ Huskisson ■ Owen St, Huskisson Casual bookings Wendy 4441 7985 ■ Adult Mixed Group Mon PM & Thu AM Ph June Gripppling 4443 3065 or John Hayward 4441 6979 ■ Ladies Tue AM Ph Jan Chappelow 4441 6417 ■ Mixed Comp Wed night Ph Jenny Durante 4441 5766 ■ Coaching available Lou Durante 0428 210 893

Tennis ■ The Country Club, St Georges Basin ■ Social Mon 6-9pm & Thu 9am-1pm ■ Comps Tue or Wed 6-9pm ■ Ph 4443 0666 ■ thecountryclub.com.au/sport/tennis/

The Country Club Computer & Technology Club ■ The Country Club — St Georges Basin, Paradise Beach Rd, Sanct Pt ■ 2nd & 4th Mon with 2 meetings per day 9.30-11.30am & 12.30-2.30pm ■ Ph John 0404 291 540

Ukulele/Guitar - Learn to Play ■ The Phoenix Group ■ Community Arts Cottage, 48 Edmund St Sanctuary Pt ■ Thu 1-4pm ■ No experience necessary ■ Sandra 4443 2073

Vincentia Bush Care Group ■ Tue 9am - 12 noon ■ Ph 0418 460 594

Fortnightly Meetings

Bay & Basin Camera Club Vincenia Community Hall, rear Coles carpark ■ 2nd & 4th Tues 7.30-9.30pm
 ■ Pam 0401 043 833

SCA Shire of Adora Medievalists of the South Coast Wandandian Progress Hall ■ Every 2nd Wed 5.30-7.30pm
 ■ e: seneschal@adora.lochac.sca.org;
 ■ w: adora.lochac.sca.org/regular-activities

Shoalhaven Masonic Widows Association Basin View Masonic Village Hall, 130 The Wool Rd ■ 2nd Mon 10am ■ 4441 0436 or 4441 1644

Wool Road Spinners & Weavers Jervis Bay Baptist Church classroom, behind church, cnr The Wool Rd & St George Ave, Vincenia ■ 1st & 3rd Thu 9.30am-1pm
 ■ Karen 4443 5239

Monthly Meetings

1st St Georges Basin Scout Group Meetings 1st Mon 6.30pm ■ Tasman Rd Scout Hall, SGB ■ Paula 0400 674 525

Amnesty International - Bay & Basin 3rd Mon ■ New members welcome ■ bayandbasinamnesty@gmail.com

Association of Independent Retirees-AIR Bomaderry Bowling Club, Meroo Rd, Bomaderry ■ 2nd Tue 10am ■ Peter Moate 4448 7788

Basin Baptist Church 165 The Wool Rd, SGB ■ 2nd Mon Ladies Craft Group 9.30am ■ Marion Atkins 4443 6088

Basin Business Forum every 2nd Tues 8-9.30am
 ■ e: basinbusinessforum@gmail.com or 

Basin View Daylight Lodge No.1015 (now consolidated with Lodge Milton No. 63) Milton Masonic Centre, 128 Princes Hwy, Milton ■ 2nd Mon 6pm
 ■ M/Ship & other enquiries Ken Sheppard 0428 638 611

Basin View Rural Fire Service Fire Station ■ 3rd Fri 6.30pm ■ Denise Fabreschi 0412 780 899

Bay & Basin Brew Club ■ 2nd Fri 7pm at alternate locations ■ Matt 0413 172 757

Bay & Basin Cancer Support Group Venue Room, SGB Country Club ■ 2nd Thu 10am-12pm ■ Dianne 4443 3275

Bay & Basin Cricket Club Meetings held 2nd Tue 7pm ■ St Georges Basin Country Club ■ Ph Chris 0403 113 362

Bay & Basin Multicultural Support Group Community Centre, Meriton St, SGB ■ 1st Thu 11am-1pm ■ Zaga Tkulja 4229 2755 or Anu Mehta 4422 5933

Bloomers & Buds Social Gardening Group Inc. Community Centre, Dent St, Huskisson ■ Last Wed 9.30am ■ Ph Denise 0408 723 270

Combined Probus Club of Jervis Bay & Districts Inc. SGB Country Club, Function Room ■ 4th Thu 10am-12pm ■ Pres. Jan Golding 0438 306 536; Sec. Denise Stevens 0408 008 460

Combined War Widows & Laurel Club of Legacy Huskisson Meeting & Lunch ■ Club Jervis Bay (RSL) ■ 2nd Tue at 11am ■ Eti Asplin 0407 299 962

Country Labor – Jervis Bay/SGB Branch 4th Wed 7pm ■ Vincenia Public Hall ■ Deb Shapira Secretary 0409 021 714 or email deborah.shapira@bigpond.com

Garden Club of Jervis Bay & District Inc. Community Centre, Meriton St, SGB ■ 4th Thurs 2pm ■ Shirley Gatti 4441 7421 or 0410 519 839 e: waratahsatjbd@gmail.com

Honey Beez Gardeners Group 3rd Wed 11.30am ■ Vincenia Community Hall (behind Coles carpark) ■ Lauren 4443 5946

Huskisson RSL Sub Branch 2nd Thu 5pm
 ■ Club Jervis Bay ■ Sec Helen Walker 4441 5282

Huskisson Rural Fire Service 2nd Tue 7pm ■ Captain Sanna Reeves 0408 480 424

Jervis Bay Community & Men's Shed Computer Service Day 1st Thu 1-3pm ■ Call Colin for booking 0412 347 322

Jervis Bay Divers Club Club Husky, 336 Huskisson Rd, Huskisson ■ Last Wed 7pm ■ contact_2@jervisbaydivers.org or call Susan 0409 875 358

Jervis Bay Lions Club Club Jervis Bay ■ 1st Thu 6pm for 7pm start ■ Pres. Jeff Thomas 0417 772 262; Sec. Debbie Stewart 0406 378 205

Jervis Bay Probus Club Inc. (C) RFBI Basin View Masonic Village, 130 The Wool Rd, Basin View ■ 3rd Mon 10am ■ Ian Collins 0424 292 625 ■ secretary.probusjervisbay@gmail.com

Jervis Bay Triathlon Club Inc. Usually Iluka, Booderee National Park ■ Group Training Day 3rd Sun 8am ■ All welcome including juniors ■ Pres. Tony Lim 0411 052 746 ■ admin@jervisbaytriathlonclub.org

Justice of the Peace Assoc NSW Shoalhaven Branch Bomaderry Bowling Club, Meroo St ■ 1st Mon 1pm ■ Visitors most welcome ■ Brenda 0407 065 031

Marine Rescue Jervis Bay - VMR 209 Voyager Park, Currumbene St, Huskisson ■ 1st Wed 10am @ Club Jervis Bay ■ www.marinerescuejervisbay.org.au/ ■ 4441 5433

What's On...What's On...What's On...What's On...What's On...What's On

Nationals Branch Shoalhaven meetings | Ian 4443 3780

National Servicemen's Assoc., Shoalhaven Sub-Branch

Rotating meetings on 4th Sun || Ulladulla Ex-Servos Club 0930 for 1000hrs start || Nowra Ex-Servos Club 0930 for 1000hrs start || Sussex Inlet RSL Club 1000 for 1030hrs start || Jim Reid 4421 2886

Nowra & Districts Totally & Permanently Incapacitated (TPI) Social Welfare Club

3rd Tue 11am || Nowra Veterans Wellbeing Centre, 124 Wallace St, Nowra || Leanne 0419 464 313

Nowra Legacy Group 66 Bridge Rd, Nowra || 1st Mon (except January) 10am || 4423 1795 or 0409 981 663

NSW Transport Authorities Retired Employees Assoc

Nowra Bowling Club, cnr Osbourne & Junction St || 2nd Thu 10am for 10.30am start || Pres. Bob 4421 5265 or Sec Aileen 4421 6660

Sanctuary Point Mens Shed 17 Clifton St, Sanct Pt ||

1st Thu 10.30am || All members welcome || Open Mon-Fri 9am-3pm || Any blokes that want to get out of the house for a while drop in for a cuppa and a chat || John 0413 837 538

Shoalhaven Avicultural Society 2nd Tue 7.30pm ||

PCYC Hall Park Rd Nowra || 4423 4475

Shoalhaven Beekeepers Ass, Inc. West Street

Community Centre, West St, Nowra || 3rd Wed (ex. Dec 2nd Wed) 5.30pm for cuppa, meeting 6pm sharp, guest speakers most months

|| e: shoalhavenbeekeepers@gmail.com or 

Shoalhaven Caravan Club bi monthly 11am

|| Nowra Bowling Club followed by lunch ||

Ph Kathy 0427 874 201

Shoalhaven Ex-Servicemans Dance Club 3rd Sat

7-10.30pm || Shoal Ex-Servicemans Club 157 Junction St, Nowra || social dance incl. modern ballroom, new vogue and sequence, latin, rock n roll || visitors welcome light supper || Ph Stuart 0413 051 003

Shoalhaven Mark & Royal Arch Chapter No.73 1st

Thu 7pm || RFB Village Hall, 130 The Wool Rd, Basin View || Freemasons (attached or current) || Glen Green 0417 453 999

Shoalhaven Orchid Society 3rd Mon Feb-May &

Sept-Dec 7pm; Winter day meetings 3rd Sat June, July & Aug 10am || Bomaderry Community Centre, 17-19 Birriley St, Bomaderry || Visitors welcome || 0419 241 177

Shoalhaven Philatelic Society 2nd Mon 7pm || Nowra

Bowling Club, Osborne St, Nowra || John 4421 4624

Shoalhaven Prostate Cancer Support Group 4th Thu

10am-12pm || Bomaderry Bowling Club || Fred Hocking 0435 628 110 e: ShoalhavenPCSG@gmail.com

Shoalhaven Scout Fellowship 3rd Sun || David Ravell

4441 8659

Shoalhaven Parkinsons Support Group Nowra

(Shoal. Shakers) 1st Wed 10am-12pm || Masonic Hall, Moss St, Nowra || Betty Coulton 4442 1475

Shoalhaven Transition 1st Tue || Trish Kahler 4443 4713

or shoalhaventransition@yahoo.com.au

St Georges Basin Probus Club Inc. (Mixed) SGB

Country Club, Function Room || 3rd Thu 10am-12pm || Sec. Robyn Dalleywater 4408 8084

St Georges Basin Rural Fire Brigade Fire Station, The

Wool Rd, SGB || 3rd Mon 7.30pm || Cpt Michelle 0427 288 340

St Georges Basin VIEW Club Luncheon SGB Country

Club, Function Room || 3rd Fri 10.30am for 11.30am start || Robynne Daniels 0418 630 877

Sussex Inlet Cancer Support Group 2nd Fri 10am ||

Sussex Inlet Neighbourhood Centre || Robin Lang 4441 0155 or Kay Cunningham 0408 297 325

The Country Club, St Georges Basin Fishing Club The

Country Club, StGB || 4th Sun 2pm (ex Christmas) || Russell 0411 573 238

Tomerong School of Arts 2nd Mon 1900hrs || Tomerong

School of Arts Hall || www.tomeronghall.com

|| New members welcome

Vietnam Veterans Assoc - Jervis Bay Sub Branch

Club Jervis Bay || 3rd Thu 5.30pm || Barbara Herbert 0437 144 345 || e: vvaajervisbay@gmail.com

Vincentia Red Cross Holy Spirit Church Hall, St George

Ave, Vincentia || 4th Wed (except Jan) 1pm || Enquiries Pat Pilkington 0491 483 142

Vincentia Rural Fire Brigade Fire Station, The Wool

Rd, Vincentia || 1st Mon 6.30pm || Cpt. 4401 1750

Wandandian Progress Association 1st Tue 6pm ||

Progress Hall

Wildlife Rescue South Coast (formerly Native Animal

Network Assoc - NANA) || Nowra Library Meeting Rooms, 10 Berry St, Nowra || 2nd Wed 7pm || 0418 427 214

What's On...What's On...What's On...What's On...What's On...What's On

Weekly Church Services

Anglican Church -

Vincentia ■ Vincentia Primary School, George Caley Place, Vincentia ■ 8.30am Traditional Service each Sunday ■ 10.30am Contemporary Family Service with kids and youth programs ■ Minister Campbell Mackay 0478 228 113

Basin Baptist Church ■ 165 The Wool Rd, SGB ■ Sun Morning Service 9.30am ■ Minister David Marsden 0408 779 451

Bay & Basin Uniting Church ■ Meriton St, SGB ■ Sun 9.30am Family Worship w/Jnr Church ■ Minister 4443 0864

C3 Church Jervis Bay ■ 20 Birriga Av, Worroving Hts ■ Sun 9.30am Family Service ■ Every morning except Sun 5.30am Prayer Meeting ■ Office 0429 335 024 ■ web: c3churchjervisbay.com.au

Catholic Church ■ 23 St George Ave, Vincentia ■ Mass times: Sat vigil Mass 5pm ■ Sun 9am ■ Mon Thu Fri 8am ■ Tue Wed 5pm ■ www.nowraparish.org.au/masses/mass-times

Jervis Bay Baptist Church ■ Cnr The Wool Rd & St George Av, Vincentia ■ Sun 9.30am Morning Service

Seventh-day Adventist Church ■ 169 McKay St, Nowra ■ Sat 9.30am Bible Study, 11am Worship Service ■ Future planning for possible Bay and Basin Contemporary Service ■ Minister Adam Tonkin 0413 538 514

Monthly Church Services

Spiritualist Meeting Scout Hall, 39 Tasman Rd, StGB ■ 2nd Sun ■ 2pm ■ Ph 4443 0628

Other Activities

Australian Breastfeeding Association, Shoalhaven Group 24 hour Breastfeeding Helpline 1800 686 268 for information about local Mum-to-Mum get togethers ■ www.breastfeeding.asn.au

Bay & Basin Branch of the Liberal Party Meets Quarterly ■ 7pm ■ Venue SGB Country Club

Bay & Basin Uniting Church Huskisson OP SHOP at Huskisson Church Centre ■ 53 Hawke Street, Huskisson ■ Mon-Fri 9am-4pm, Sat 9am-12.30pm ■ 4441 7495

Other Activities cont'd

BBCR Activities Hub 18 Sanctuary Pt Rd, Sanctuary Point ■ Mon, Tues, Thurs & Fri 9am-3pm (closed Wed) ■ 4443 7681

Community Cottage 48 Edmund St, Sanctuary Pt ■ Lesley 0426 878 421 ■ Mon Pottery 9am-2pm ■ Tue & Thu Body/Soul Fitness 8-9am ■ Tue Studio 19 Dance 3.30-8.30pm ■ Tue & Wed Daly Moves Exercise 9.30-10.30am ■ Fri Mannerhouse Outreach Childrens Group 4-5pm

Shareostomates, Shoalhaven Area Ostomates

Support Group Nowra Community Health Centre, 5-7 Lawrence Av, Nowra ■ Contact Brenda Christiansen on 0422 006 550 or 4424 6321 for group times and dates ■

Improving lives through shared experiences

Tomerong School of Arts Mon Pilates 6-7pm ■ Wed NIA 11.30-1.30pm ■ Sat Markets (3rd Sat) 8am-1.30pm ■ email tomerongmarket@gmail.com ■ Sat (4th Sat) Yoga Tapas 8-10am ■ Further info www.tomeronghall.com

Youth & Community Centre 34 Paradise Beach Rd, Sanctuary Pt ■ 4443 9244 ■ Operating Hrs Mon-Fri 9-4pm offering a range of social & recreational activities

Community Forums

Basin Villages Forum 3rd Mon 7.30pm ■ Meriton St Community Centre, SGB ■ Christine 4443 7665

Huskisson & Woollamia Comm. Voice bi monthly 2nd Mon 7pm (Feb-Nov) ■ Huskisson Community Centre, Cnr Tomerong & Dent St, Huskisson ■ www.hwcv.org.au ■ exec@hwcv.org.au

Sanctuary Point Community Pride Function Room at The Country Club, St Georges Basin ■ Christine 0409 363 243 or Gwen 0419 492 348 ■ e: sanctuarypointcommunitypride@gmail.com

Tomerong Community Forum 2nd Mon 2030hrs directly after the School of Arts meeting ■ Tomerong School of Arts Hall ■ New members welcome

Vincentia Ratepayers & Residents Association

Vincentia Community Hall (Coles carpark) ■ 3rd Thu of every 2nd month (Feb, Apr, Jun, Aug, Oct, Dec) 7.15pm coffe/tea/biscuit 7.30pm start ■ www.vrra.org.au ■ vrra.ccb@gmail.com ■ Secretary 0438 856 568 ■ vrra.ccb

What's On...What's On...What's On

Playgroups

Aboriginal Playgroup Mon 9.30-11am || Noah's Inclusion Services the old church 48 Paradise Beach Rd, Sanctuary Point || Ph Mel Harpur 4423 5022 or email mharpur@noahsark.nsw.edu.au

Sanctuary Point Sing & Play || Tues 9.30-11.30am at Sanctuary Point Connect || A free supported playgroup with music, craft and more || Tracey Popple 4443 0520 or e: tracey.popple@det.nsw.edu.au

Splash Playgroup || Mon 9.30-11.30am || Paradise Beach Reserve || Renee 0423 606 559

Baby Playgroup - for babies 6 wks to 2 yrs || Thu 1-2.45pm at Sanctuary Point Connect || Tracey Popple 4443 0520 or e: tracey.popple@det.nsw.edu.au

Little Steps - a playgroup for children not attending childcare || the old church 48 Paradise Beach Rd Sanctuary Point || Ph 4423 5022

St. Georges Basin Wed 9.30am || Cnr Tasman Rd & Terry St, SGB || Melissa Horselman 0424 218 547 or find us on facebook

Justices of the Peace

BASIN VIEW

Barling, Debbie 0411 275 656
Gray, Frank 4443 5365

HUSKISSON

Hopkins, Cheryl 4441 5714 0407 409 903

OLD EROWAL BAY

Lord, Simone 4443 8300

SANCTUARY POINT

Askew, Matthew 0422 068 209
Cassar, Lawrence (Joe) 4443 8805
Flynn, Mark 0418 669 688
Hawkins, Paul 4443 8800 0417 219 260

ST GEORGES BASIN

Askew, Ross 0428 434 657
Bos, Warren Pieter 0412 578 381
Crass, Charles 0400 876 696
Creighton, Sandra 0411 245 188
Thomas, Jeff 0417 772 262

VINCENTIA

Casmiri, Luciano (Lou) 0438 856 568

Local Services...Local Services...

Venues for Hire

Bay & Basin Uniting Church Meriton St, StGB || 4443 2642

Community Arts Cottage 48 Edmund St, Sanctuary Point || Lesley 0426 878 421

Huskisson Community Centre Dent St, Huskisson || Ph Peter 0401 436 353

Huskisson Scout & Guide Hall Kiola St, Huskisson || Ph Scout South Coast & Tablelands 02 42746334

Jervis Bay Maritime Museum Classrooms Dent St, Huskisson

Sanctuary Point Youth & Community Centre 34 Paradise Beach Rd, Sanctuary Point || Ph: 4443 9244

St Georges Basin Scout Hall Tasman Rd Scout Hall, St Georges Basin || Tammie 0472 658 505

Tomerong School of Arts 358 Hawken Rd, Tomerong || \$15 per hour || Email tomeronghall@gmail.com || www.tomeronghall.com

Vincentia Community Centre rear of Bilo carpark, Wool Rd, Vincentia || 4429 3463

Wandandian Progress Association Hall D2683 Princes Hwy, Wandandian || www.wandandian.org.au || Booking Officer Anne Simpson 4443 54100

UPDATE YOUR LISTING

WE DON'T KNOW IF YOU DON'T TELL US!

Are Your ...What's On... Details Incorrect or Out of Date?

Email your updated information to editor@aboutbayandbasin.org

THE BLOCK

Contributed by John Blackmore

During the 1970s, Arundel Guest House, located on the western side of Currambene Street opposite Huskisson R.S.L. Club, was demolished. First built around 1910, Arundel *“was the family home of Richard and Amy Dent. It later became a guest house to meet the rising demand for tourist accommodation when the founding of the Royal Australian Naval College in 1913 led to an increase in visitors to the area. The guest house land went right to the waterfront, with a tennis court on the lower level. In 1928, the guest house was leased by a Scottish family, the Whinways, who changed the name to Ingelburn Guest House, to reflect their Scottish heritage. The telephone exchange also operated from here – they charged an operational fee of 1/6- to connect a call after 6 p.m.”*

Today, this information can be viewed on a public information sign in Huskisson near the corner of Owen and Currambene Streets. Stan Dent purchased Arundel Guest House in 1940, renovated and converted it to flats. These subsequently became popularly used by British Naval personnel attached to the base at present day H.M.A.S. Albatross, during and after WWII. In the initial postwar decade, it became home for many of these temporary Shoalhaven residents of the time.

Those who lived at this guest house were numbered among a 2,000 strong contingent of Royal Navy personnel based at H.M.A.S. Albatross. At the time, the newly created (in 1948) local government area totalled under 20,000 permanent residents, making this cohort of British Naval personnel a significant section of the entire Shoalhaven population. This initial decade was the one that established the traditions of Australia’s naval air station established on the western side of Nowra Hill.

By the early 1980s, the large spare block of land at Huskisson created by the demolition of Arundel House had become somewhat overgrown. Some people waiting at the nearby bus stop often threw litter, especially empty glass bottles and cans, on

to *‘the block’* while sitting on the wall on what is today the southern end of that car park.

Local Huskisson resident Susan Settree, upon hearing that Shoalhaven Council intended using *‘the block’* by allowing some amusement rides to operate on this piece of land during school holiday times, decided it was time for a clean up of *‘the block’*. After collecting up all the litter on *‘the block’* one day, Susan began the daunting task of whipper-snipping around the edges of this large piece of vacant land in the centre of Huskisson. This task took her three full days, after which she claimed to be suffering from a case of *‘whipper-snipper R.S.L.’*

In subsequent decades, Graham ‘Taffy’ Jones grew to become an institution in the Huskisson R.S.L. Soccer Club, today known as Huskisson Vincentia Football Club. This came through his care and maintenance of the main soccer field in town. He saw Susan undertaking her work on *‘the block’*. Graham had been living in Huskisson since 1971 with his wife GLENYS (**About.....®** Monthly Feature August 2019) and their two daughters Kim and Helen. He had originally been a Royal Navy man in Wales before transferring to the R.A.N., after which he settled into retirement at Huskisson with his family.

‘Taffy’ went back to his home in Morton Street (one street back and parallel to the main street of Owen Street) before returning with his lawnmower. His helping hand to Susan’s act of community pride led to a shop owner across the road appearing with food and drinks for Susan and ‘Taffy’ to have for their lunch. Word of mouth got around town, as people soon began appearing from nowhere to help.

From the same entrance to the car park that exists today, the rubbish and grass that had been collected from *‘the block’* was removed to the rubbish tip. Susan’s husband John used his one tonne ute, aided by their son Craig, to remove a *‘mountain’* of grass left on *‘the block’* after council tractors had slashed it out of its overgrown state.

Soon after *'the block'* clean up, the R.S.L. Sub-branch across the road took an interest in this spare block of land. They recognised Susan's selfless actions by presenting her with a framed certificate. Although Susan remained unsure whether this certificate of appreciation was given to her for this effort, or her many years spent contributing to the R.S.L. Club's Combined Sports Committee's activities.

Ongoing development plans for the streetscape of Owen Street, and the use of Huskisson's traditional wharf area were put in place. This protected the signature view of Jervis Bay created in the 1970s by the demolition of the longstanding guest house that had stood on *'the block'*. It has since been the subject of much discussion, and at times, media controversy.

The story of *'the block'* continues up until the present day, with it becoming a sharp end of the ongoing development issues which heightened along the Owen Street streetscape. This process peaked in the late 1990s, and in the noughts decade that followed. Several plans were floated for future use/s of *'the block'*. The service station owned by the McKenzie family was repurposed, then eventually converted to car parking after a period of time, with both sites around the Huskisson Hotel and Huskisson R.S.L. Club being redeveloped at different stages. An alfresco outdoor dining precinct was created by Shoalhaven City Council along both blocks east and west of Currumbene Street on the southern side of Owen Street. This was important in maximising the signature view of Jervis Bay created by *'the block'*.

The visiting sailing ships of THE FIRST FLEET RE-ENACTMENT in January 1988 (**About.....®** Monthly Feature November 2017) opened a window of opportunity for Huskisson in the national tourism market. This was cemented by the creation of Jervis Bay Marine Park in the latter 1990s, while visitors flock to Owen Street to dine during breakfast, lunch and dinner times of the day. SEE CHANGE (**About.....®** Monthly Feature July 2016), a festival begun across the Bay & Basin in 2000, and continued as a biennial winter arts festival until 2018, closed a window in the middle months of the year when Huskisson traditionally experienced a quiet period outside the peak tourist seasons.

'The block', and other development along the northern side of Owen Street Huskisson had several other key factors play out during the nineties and noughties decades. Throughout the last years of the 1990s, ongoing meetings between the R.S.L. Club and Shoalhaven City Council occurred. A constant in these meetings was the issue of car parking. A proposal was considered which involved moving the Currumbene Street intersection to the western side of *'the block'*, thereby changing access to the wharf area off Owen Street. Underground car parking was suggested under a proposal which would not effect the signature view of Jervis Bay enjoyed by those taking advantage of the alfresco footpath dining precinct created on the southern, or top side of the Owen Street streetscape.

Another key development was the removal of a covenant preventing any development on a strip of land between the R.S.L. Club and adjacent Service Station, and the Hotel. This had been in place since the early 1960s when the owners of the Hotel had it implemented upon the opening of the R.S.L. Club's fully licensed, multi-level brick premises. The R.S.L. Club paid for the covenant to be lifted in 2000.

Around this time, like many other returned service men and women organisations across Australia, Huskisson R.S.L. Club needed to think about its future for members of both its R.S.L. Sub-branch, and the Club itself. Around that point, four separate titles existed on the various parcels of land around Huskisson R.S.L. These were streamlined under one title by the time the Huskisson R.S.L. Sub-branch members were asked to vote on the sale of the land to the R.S.L. Club at an extraordinary meeting held on 8th July 1999. With the approval of the state headquarters of the R.S.L. movement, a figure commensurate with the market value of the land was agreed upon, and passed by the required majority of the Sub-branch members.

Today in 2023, *'the block'* remains a car park within the confines of the land that began as a guest house more than a century ago, Huskisson R.S.L. operates under the Club Jervis Bay banner, while Huskisson R.S.L. Sub-branch continues to conduct its business very close to where its original clubhouse was built in 1949. ■



Shoalhaven Libraries Sanctuary Point

Paradise Beach Rd Sanctuary Point, Monday – Friday 9.30am – 5pm Saturday 9.30am – 12.00pm
Phone 4406 2076 Email sanctuarypointlibrary@shoalhaven.nsw.gov.au
<http://www.shoalhavenlibraries.com.au/Our-Libraries/Sanctuary-Point>

Looking for something to do on those cold, grey winter days? The library has you covered! Drop in and stay for a while, choose from books, puzzles, DVDs, magazines and more. Did you know we even have very cute 'My First Library Cards' for kids? Why not join up the whole family?



Winter School Holiday fun!

- Monday 3rd July
10.30am-12.00pm.
Whizz, Bang, Fizz!
A morning of hands-on science fun. Suitable for kids aged 5-12 years.
- Thursday 6th July.
10.30am-11.30am.
Brr! Cosy up at the library for **Winter Art**. Make and decorate a magical snow globe and then create some beautiful, wintery snowflake decorations. Suitable for ages 5-12 years.
- Tuesday 11th July
10.30am-11.30am.
Kaleidoscopes. Explore light, reflections, and symmetry by building and decorating your own kaleidoscope. Suitable for ages 5-12 years.



Bring along your own device if you have one. There will be time for questions at the end of each session.



Be Connected
Every Australian online.

- Wednesday 5th July. 11.30am-1pm.
Safety First.
- Wednesday 12th July 11.30am-1pm. **All About Apps.**
- Wednesday 19th July 11.30am-1pm.
Social Media Apps.
- Wednesday 26th July. 11.30am-1pm.
Service NSW & MyGov.
- Wednesday 2nd August. 11.30am-1pm.
Identifying & Avoiding Scams.
- Wednesday 9th August. 11.30am-1pm.
Connecting to Others.

Please note bookings are essential for all events. To secure a place at any of these free sessions call 4406 2076 or book online at <http://www.shoalhavenlibraries.com.au/events>.

Be Connected Tech Program

The library is running classes in July and August to help build your skills and confidence in using computers, tablets, and smartphones.

John Thornecraft
Electrical
Lic No. EC 41572 ABN 25 052 886 301
Servicing Bay & Basin and surrounding areas
New Homes • Extensions • 24 Hr Service
Installation & Repairs, Hot Water Systems, Stoves, Small Jobs
johntelectrical@gmail.com
0402 017 295

What goes in your yellow bin?

Most items that go in your yellow recycling bin were once **food, beverage or detergent containers** that you would typically buy at the supermarket.



Hard Plastic Bottles

eg: soft drink, sauce, shampoo, kitchen cleaners



Hard Plastic Containers

eg: yoghurt, butter, icecream, fruit punnets, deli takeaways



Aluminium Cans, Metal Food Cans & Aerosol Cans



Glass Bottles & Jars

eg: soft drink, beer, jam, condiments
NO drinking glasses or other types of glass



Paper & Carboard

eg: cereal boxes, magazines and brochures
NO absorbent paper such as tissues, napkins



Tetra-Pak Cartons

If an item doesn't belong in these categories, please keep them out of the yellow bin. Remove lids. Small plastic lids & metal bottle tops go in the red bin. Larger metal lids go in the yellow bin. NEVER place recyclables into a plastic bag.

Get Recycling Right For answers to over 100 items visit shoalhaven.nsw.gov.au for the **A-Z Recycling & Disposal Guide**.

— LOCAL —
GLASSMASTER
 GLAZING SPECIALIST

EMERGENCY  SERVICE

- 0432 074 704 -

24 Duranbah Drive, Huskisson – For a free measure & quote call Andy

- Specialising In:
- Broken Glass Replacement
 - Shopfront Repairs
 - Splashbacks
 - Table Tops
 - Mirrors
 - Shower Screens
 - Glass Cut To Size
 - Commercial Work

HUNT

REMOVALS & STORAGE

"OUR PROUD REPUTATION IS YOUR GUARANTEE!"

INTERSTATE & BACKLOAD REMOVALS

RESIDENTIAL & OFFICE RELOCATIONS
 CONTAINER STORAGE & TRANSIT
 INTERNAL MODULAR STORAGE
 INSURANCE ARRANGEMENTS
 PACKING MATERIALS AVAILABLE
 PACKING SERVICES AVAILABLE
 OBLIGATION FREE QUOTES



NOWRA: 02 4422 7742
 JERVIS BAY: 02 4441 7744

3 TOM THUMB AVE, SOUTH NOWRA NSW 2541
www.huntremovals.com.au
info@huntremovals.com.au



MENTION THIS ADD AND RECEIVE 10% OFF YOUR NEXT MOVE!



RODNEY NORFORD PAINTING

licence No 273212C

BRING YOUR HOME BACK TO LIFE AGAIN

- Repaints
- Domestic / Commercial
- Internal / External
- Pensioner Discount
- Fully Insured & Friendly
- FREE QUOTES

0407 146 671



Sanctuary Point PRINTING

"Your local complete printing service"

OFFSET & DIGITAL FULL COLOUR PRINTING

Business Cards | Envelopes | Letterheads | Flyers
 Invoice Books | Magazines | Newsletters | Menus
 Annual Reports | Short Stories | Autobiographies

4443 0014

15 Nirimba Ave, Sanctuary Point NSW 2540

e: spprint@shoalhaven.net.au

w: www.sanctuarypointprinting.com.au



- Full Range of locally grown flowering ornamentals, screening, local species & bush food plants
- Tubestock to advanced plants
- Wholesale prices – All welcome
- Eftpos Available

0488 332 562 – 4443 4029 (Ph/Fax)

email: wwirra@bigpond.net.au

web: wirinwirra.com

Located on the cnr of Hill Street and Evelyn Road, Tomerong



Did you know that The Flagstaff Group provides NDIS supports for people living in the Bay and Basin area?

The Flagstaff Group is pleased to announce the expansion of its School to Work Pathways with a new site in Vincentia. Meet our team of experienced support workers with the skill set and knowledge to help you achieve your goals. Why not join our activities for July and August 2023? We'd love to have you onboard.

MONDAYS:

3D CreateSpace (3.30pm – 6.30pm) Curious about 3D Printing? Join us and learn about 3D printing, learn how it is applied and then create a design of your own using CAD tools.

Flagstaff Futures – After School Employment (3.30pm - 6.30pm)

Flagstaff Futures is a new opportunity designed to give school students with disability the opportunity to work in a supportive environment and learn work skills whilst getting paid. Part time after school employment is ideal for students aged 15-17 years. Part time jobs also provide a great introduction to a workplace where you work and get paid for a three-hour shift from 3.30pm to 6.30pm. The program also includes a free 12-hour work skills training course.

TUESDAYS:

Learn Driver Program (3.30pm – 6.30pm) Flagstaff's Learner Driver program provides the opportunity for people with a disability to undertake training that prepares for the NSW Learner Driver Test. Theoretical training is

tailored for people with a disability and covers numeracy and literacy for the test, driving laws, road rules, and features of a car. Participants can practice the test throughout the program and can take the test when they feel ready.

WEDNESDAYS AND THURSDAYS:

Cooking and Dining (3.30pm – 6.30pm)

Flagstaff's Life Choices team offer group and individual cooking and dining programs focusing on simple and nutritious cooking, meal preparation and dining etiquette. Learn how to budget, shop, follow a recipe, prepare and cook delicious meals with tastes from around the world.

SATURDAYS:

Social Club (9am – 4pm)

Supper Club (5pm – 9pm) Flagstaff's Social and Supper Clubs offer participants the opportunity to build their social capacity, learning how to plan and coordinate social activities/events with their friends with the goal of being able to complete this as independently as possible.

COMING SOON! COFFEE CREATIONS

Would you like to learn the skills to make the perfect coffee? Flagstaff's coffee-making classes provide you with the knowledge and skills to create a tasty coffee with appealing latte art. We will provide hands-on instruction for pour-over brewing, making espresso and steaming milk. A great skill to learn for any job in hospitality.

Contact Aaron Trott, Manager Life Choices and Employment Services on 0428 263 679 to book your spot.

NDIS funding is required. To find out more about Flagstaff and the services it provides visit www.flagstaffgroup.com.au.

Bay & Basin Fencing

★ Colour Bond ★ Tubular ★ Gates
 ★ Weld Mesh Steel ★ Chain Wire

0456 198 507





Shoalhaven Justices of the Peace
at work for you

NSW
Justices

We cannot certify a copy of a **DIGITAL LICENCE under any circumstances**. We can only certify a copy of the **ORIGINAL HARD COPY LICENCE**.

Some people will tell us they do not issue them, but that is not true. When you pay for your licence it will automatically update on your Services NSW App within 30 minutes at the most; your hard copy will arrive within ten days.

Take my advice **ALWAYS** carry your **HARD LICENCE**. An excuse of a flat battery on your mobile phone, or mobile phone is broken etc. will not work with the Police. It will be recognised that you do not have your licence and you will be fined.

Digital Licences

The **DIGITAL LICENCE** has a QR Code so that the Police are able to scan it when you are asked for your licence.

A **DIGITAL LICENCE** can be used for identification; for example on Statutory Declarations, Affidavits etc.

For other items on your phone such as Medicare card, pension card etc., the **ORIGINAL** must be presented, not a screen shot. I hope this is helpful.

Regards, Laurie

NSW Justices Association Inc.

Shoalhaven Branch – 0438 013 330 ■



McNamara & Associates Lawyers & Conveyancers

- Family focused with a friendly & caring approach
- Efficient & reliable services for all your conveyancing, family law, business and legal needs

6/3 Schofield Lane, Nowra

4423 0155

www.mcnamaralawyers.com.au



HUSKY Sports
Our community club

336 Huskisson Rd.

Ph: **4441 5135**

Information for Members & Guests

New to Husky Sports! Get a team together and Play Cornhole

MEAT MARKET
THURSDAYS
Tickets on sale 6pm;
Draw from 7pm

Barefoot Bowls
2 hours of fun for just \$10
(bookings preferred)

MINI GOLF
Open 10am
Bookings preferred
last booking 4pm

LUCKY 88 CHINESE RESTAURANT - Ph 4441 7063
Open – Lunch 12pm-2pm; Dinner 5pm-8pm
Dine In: Bookings Essential; Takeaway: Pick up from side entrance Kioloa Street

Information subject to change due to COVID-19 advice.

Is your skin in check?

Do any of the following 7 risk factors for melanoma and other skin cancers apply to you



- You're aged 50+**
- You work or play outdoors**
- You've been sunburnt in the past**
- You're fair-skinned or freckled**
- You or someone in your family has had melanoma**
- You have a lot of moles**
- You have unusual-looking moles**

If you checked 2 or more risk factors, chances are you have a higher risk of melanoma. We recommend getting your skin and moles checked as soon as possible.

MoleMap's proven mole-mapping system is designed to detect skin cancer early when it's most treatable.

**New clinic now open at
Sanctuary Point!**

Shop 3, 206 Kerry Street,
Sanctuary Point

Book online at molemap.net.au

1800 665 362 | molemap.net.au

molemap™
Check. Detect. Treat.

TWANTJA ARTS



Kaylene Whiskey, Kaylene TV, 2020. single-channel video, 1 min. Courtesy the artist, Twantja Arts, Indulkana, APY Lands, SA and Artspace, Sydney.

52 ACTIONS

Curated by Artspace

22nd June - 2nd October 2023

Featuring 52 Australian artists and collectives

Museum and Gift Shop
open every day 10am - 4pm
Woollamia Rd, Huskisson

JERVIS BAY
**MARITIME
MUSEUM**
& GALLERY

jervisbaymaritimemuseum.com.au



PROFESSIONAL AND RELIABLE COMPUTER SOLUTIONS

Supporting the Bay & Basin since 2003

4441 8430 • www.parcomputers.com.au

COMPUTER REPAIRS, SUPPORT AND SALES



Find us with
Google Maps



[https://www.facebook.com/
PARComputers/](https://www.facebook.com/PARComputers/)

Shop 1, 5 Burton Street
Vincentia Shopping Village



WHAT LIES BEYOND MOZAMBIQUE

Contributed by Corinne Le Gall

Island life on a continent – that’s probably the best description I can come up with to be closer to the truth of this land’s ambience. Admittedly I cannot comment on the whole country, having been to only a small area and with limited time.

Colonised by Portugal, Mozambique became one of their overseas province and later a member state of Portugal until its independence in 1975. Typical of colonising powers of the time, they came, they saw and they conquered. Taking control of the riches of the land – mineral, agriculture and natural resources, they cut swathes across the country, immediately owning what was within sight.

Slavery was a huge and lucrative trade and the ‘masters’ of the slaves were not only the whites as per popular belief, but the country’s very own black population who were adept at rounding up their own people to trade with the whites. These poor souls were either kept in Mozambique to work or were traded and shipped off to other Indian Ocean outposts or countries to work, at times, to their deaths. Luckily slavery was legally abolished in roundabout 1876 but unfortunately, a lot of slave traders hadn’t got the word and the trade continued in a limited fashion.

Shielded by the large island of Madagascar on its east, Mozambique’s coastline is one of natural beauty and tranquility, which perhaps belies its very turbulent past. From these shores, one can possibly imagine the number of captured people, chained together, being boarded onto ships in

unimaginable conditions to never see their home country nor families ever again.

As much as Mozambique is trying to be seen as a holiday destination in the present day, it is still a dangerous country to visit. Anything can happen at any given time, but when you walk on the beach or through Maputo the capital, there exists a sense of everyday life going about its way.

Bar, discos, markets line the streets, the people are friendly and enchanting, the food is delicious, the pace of life is easy and island-style – Mozambique could be an ideal holiday spot if not for the dangerous and volatile nature of government.

The beaches of white sands stretch as far as the eye can see with beautiful waves lapping.

Deeper towards the horizon, the blue waters beckon and all manner of water activities can be had, from snorkelling to scuba diving in the most crystal-clear waters, pristine and virgin. Surfing, canoeing or whatever else you can conjure up.

Going from one town to another, the landscape is very African. Unpaved roads boiling up the dust, Yellow Fever trees stand sentinel on the land and are sprayed with a new layer of dust each time a car goes past, majestic colonial buildings show off their history with paint peeling off and not being replaced, large piazza style squares, children being children and people going about their everyday business at a much slower and unhurried pace that we in the west are used to. ■



ATB GARDENS
YARDS + TREES

All aspects of design, plant & property maintenance.

atbcontractors.com.au ABN 16 871 580 073

- Tree Work • Landscaping • Irrigation • Water Features
- Lawn Mowing • Hedging • Mulching • Fertilizing • Aerating
- Rubbish Removal • Domestic & Holiday Rental Cleaning
- High Pressure Water Cleaning • Drone Rescue & Recovery
- All Trade Services • Colorbond Fencing

COMMERCIAL DOMESTIC RURAL PROP

0415 732 801



Mombasa Massage

Authentic East African Massage Experience

For a booking at Sanctuary Point
Phone Kiki - 0490841970 or Visit..
www.mombasamassage.net
kiki@mombasamassage.net

Grab & Go! Concrete, Brick & Green waste?

We Demolish, Remove & Recycle



Save on tip fees, any amount, slabs/walls/trees etc.

8 ton Tipper with 3 ton crane. Compact Backhoe/
Bobcat hire with grader, crusher, hammer &
screener. 11 ton wheeled Excavator/Loader.
Site clearing, excavation & road maintenance.

Call Dave, free quotes
0411 572 725

Bikes At The Basin

Shop 1/20 Paradise Beach Rd
Sanctuary Point

Ph: **4443 3777**



- Comprehensive range of new bikes
- Servicing and repairs
- Parts and accessories
- Friendly, helpful advice
- Come in and talk to Shane

Wedding Videographer



Weddings, Corporate,
Business and all other
occasions

0401 076 338

VHS to DVD's

record albums

Onto CD's

Cassettes

Home movies,
LP's and Cassettes to CD's
Onto DVD's

VHS home movies

0401 076 338



SHOP BETWEEN THE FLAGS

The Variety Store with a huge range
of Hardware, Swim, Bait & Tackle,
Gifts, Homeware, Toys
and now Ladies Clothing.

P: 4443 0085
E: sbtf@netgecko.com.au

Shop 1 18 Paradise Beach Rd,
Sanctuary Point



Shoalhaven Family History Society Inc. She Died in Broken Hill..... Or Did She??

When Harold Bridge died in Broken Hill on 25th January 1914 of typhoid, his wife Caroline Annie (nee Grant) was listed in the electoral roll as a dressmaker, living in Thirteenth Street Broken Hill. Caroline was a bit of a mystery, so searching for any information, I found her name listed online in the database of, "Record of Patients Adelaide Hospital" which is remarkable in its detail.

Caroline lived at South Terrace Adelaide, was aged 18, single and Roman Catholic. Admitted on 30th October 1879 with Hysteria, she was discharged the following day, "cured". She was a servant and was born in South Australia.

These hospital records show for each patient, their place of birth, and if not in Australia, the ship of arrival and length of residence in the Colony. Given the difficulties in finding South Australian immigration records, this is a valuable resource. For example: Sarah Daly, married, aged 47, living at Kermodie Street, was admitted on 24th October 1879 suffering from Cirrhosis of the liver and died the same day. She was born in Galway and had been in the Colony 13 years having arrived on the ship 'Standard' in 1866.

When I was searching for Caroline's death, I found no record in New South Wales or South

Australia, but a death found in the Victoria bdm index seemed likely so I paid and downloaded the certificate, to find that it was my Caroline. She had died on 2nd August 1919 at 14th Street Mildura, of pneumonic influenza (Spanish flu) aged 58 years, and was buried at Mildura the next day.

The lesson to be learned here is that given the location of Broken Hill, essential services were often to be found in South Australia or Victoria, so always try to think outside the box when faced with brick walls.

Every fact we discover leads to another question..... why was Caroline in Mildura?..... that's another story.

The Shoalhaven Family History Society Research Library in the Old Pyree School, 888 Greenwell Point Road Pyree, is open for research every Sunday & the 1st & 2nd Thursday of each month, all days from 10am to 2pm – website www.shoalhaven.net.au/~sfhs.

Our member's meetings are held on the 1st Saturday of the month (excluding January) at 1.30pm, with afternoon tea to enjoy, a chat and catch-up for everyone. Come along one day to see what we do and how we can help you.

<p><i>Nathan Parnell</i> ROOFING METAL ROOF SPECIALIST For quotes call 0422 024 000</p>	<ul style="list-style-type: none"> • All types of Metal Roofing • Fascia & Guttering • Wood Fire Install & Cleaning • Chimney Sweeping • Roof & Gutter Repairs • Down Pipes & Drainage • Leaf Guarding / Skylights <p style="text-align: right;">Lic No. 175344C</p> <div style="background-color: black; color: white; padding: 5px; text-align: center;"> <p>WE NOW OFFER: Gutter Vac Cleaning & High Pressure Water Cleaning Driveways, Roof Cleaning, Blocked Drains etc.</p> </div>
---	--



So what is spinning? The formal definition is the process of converting staple or short lengths of fibre into continuous yarn or thread. Traditional tools for hand spinning are spinning wheels or a drop spindle. More recently there is also an electric spinning machine called an e spinner. All three of these tools are used by different members of the Wool Road Spinners and Weavers.

Our President, Maureen Speer, began spinning 30 years ago. One Christmas a box had arrived from her children. Knowing that she wanted to learn to spin, they had given her a spinning wheel. The rest of the day was spent putting it together.

She turned up to a meeting at the Wool Road Spinners and Weavers to learn how to spin. With her new wheel she sat beside a lady who guided her in the spinning process and started Maureen's journey in spinning.

It wasn't long before Maureen started exhibiting her work. She then became interested in learning the art of dyeing the fibre and weaving. The delight of achieving different effects and colours, developed Maureen's great enjoyment of vibrant colours when dyeing silk which can be spun and dyed.

Maureen still spins, dyes and felts.

If you would like to see if there is a journey awaiting you in spinning, weaving, felting with sidelines of dyeing, knitting and crocheting, come and visit the Wool Road Spinners and Weavers who meet every 1st and 3rd Thursday of the month at 9.30am at 1 St George Ave Vincentia, in a room at Jervis Bay Baptist Church Vincentia. Come and visit, have a cuppa, and see if spinning, weaving or felting is something you would like to explore.

**For more info contact:
Karen 4443 5239 or Judy 0403 212 237**

St Georges Basin Senior Citizens Inc.

(aka Basin Seniors)

Providing Fun Activities and Social Contact for "Young at Heart" Seniors

Senior Citizens are people 50 and over either retired or semi-retired.

Are you looking for something to do, something to get you out of the house where you'll meet people and make new friends, if so, we are here for you.

Perhaps you are new to the district and looking for company and an interest? Why not join us for a friendly social morning of **Indoor Bowls**, perhaps **Darts**, or maybe a game of **Euchre** is your thing? Our card players are happy to teach beginners.

We are a happy and friendly group of people providing activities and fun days for our local Senior Citizens and we'd love to have you join us.

Please come along and have a free morning with us to see if you like what you see and would like to come back and join us.

We are located in the Auditorium at The Country Club – St Georges Basin, from 9am each Thursday. Activities commence at 9.30am. If you don't know how to play Indoor Bowls, don't worry, we'll soon teach you in a very social, relaxed and friendly atmosphere.

Our **Bushwalking Group** will make new members very welcome also. They meet on alternate Friday mornings. All walks are easy and designed for Seniors.

Anyone interested in any of our activities can contact me on 4443 6031 or 0403 783 290.

Till next time, stay safe and well everyone, keep smiling, Margaret.



Noah's Inclusion Services

Contributed by Nicole Kennedy, Team Leader
48 Paradise Beach Rd Sanctuary Point (next to the blue library) Ph 4423 5022



Noah's Inclusion Services and Let's Read anywhere, anytime

Come along to Noah's playgroups share in the fun and learn more about the importance of reading with your baby, toddler and young child. Sharing books from birth helps children become better readers for life.

You can help your toddler grow into a strong reader by:

- Talking with them about the games they are playing
- Pointing to and naming things they see
- Reciting the same songs, rhymes and stories over and over again
- Find words that rhyme in stories and songs
- Play and have fun – you don't have to read the whole book
- Carry books with you wherever you go
- Visit our local library and join in the sessions its free and fun
- Come along to Noah's playgroup – every child receives a FREE book

Noah's playgroups are staffed by early childhood teachers and educators and run weekly during school terms.

Monday – Billima Booris for Aboriginal families and their children 9.30am – 11.30am

Wednesday – PlayConnect 9am – 10.30am

Friday – Little Steps 9.30am – 11am.

- Sliding Door Repairs
- Window & Flyscreen Repairs
- Pensioner Discounts Available
- Servicing the local area since 2006



the Roller Doctor™

STEVE BERRY

0411 555 182

e: info@therollerdoctor.com.au
www.therollerdoctor.com.au

BAY & BASIN TREE SERVICE

- Tree removal
- Tree trimming
- Block clearing
- Chipping service
- Hedge trimming
- Stump grinding
- Mulch supply
- Firewood

Free Quotes
Competitive rates
Fully insured
Qualified Arborist – Cert III
17 years experience

0414 801 730

e: bayandbasintreeservice@gmail.com



What we are doing at VINCENTIA PUBLIC SCHOOL

Mother's Day Stall

The wonderful volunteers from our P & C held a Mother's Day Stall with an amazing range of presents for students to purchase. We hope you all had a lovely Mother's Day!



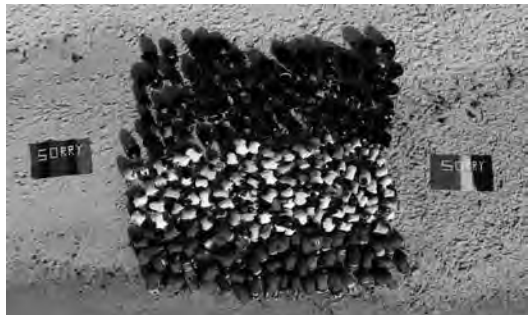
Cross Country

There was a lot of sun, sweat and smiles at our Cross Country Carnival held at school in May. We had 34 students who



qualified for the District Cross Country Carnival and two who made it through to the Regional!

National Sorry Day and Reconciliation Walk During Reconciliation Week, our students created meaningful artworks that were displayed around the school for National Sorry Day. As part of that week, the whole school walked to Collingwood Beach proudly wearing the colours of red, yellow and black, and a photograph was taken from a drone with the students formed into the Aboriginal flag.





What's been happening at St Georges Basin Public School

STAGE 3 ROBOTICS Stage 3 have been doing coding and robotics with MicroBits. What is a MicroBit? A micro:bit is a tiny, pocket-sized computer. It was created by the BBC. The BBC Micro was used to help people learn about computing – but today's BBC micro:bit looks very different!



ST GEORGES BASIN PUBLIC SCHOOL
KINDERGARTEN 2024
Expression of Interest form

Expressions of Interest are **NOW OPEN**. This is the first step in applying for 2024 Kindergarten enrolment at St Georges Basin PS. Simply scan this QR code on your phone and complete the form. We will then contact you regarding information packs, transition programs and the next step of online enrolment at our school.

REGISTER NOW

- stgeorgesb-p.school@det.nsw.edu.au
- 02 4463 4251
- <https://stgeorgesb-p.schools.nsw.gov.au/>

ATHLETICS CARNIVALS Our students enjoyed our recent Years 3–6 and K–2 Athletics Carnivals. It was so wonderful to see the kids cheering each other on and all had a go. The K–2 parents joined in some races, plus the egg and spoon and sack races were a crowd favourite. It was wonderful to see so many parents attending to share this day with the kids. A huge thank you to the P&C volunteers who provided a canteen for our families and students. It is a lot of hard work to run a canteen on these days and we truly appreciate all your time and effort.





VINCENTIA HIGH SCHOOL NEWS



Friday 2 June 2023 saw the official opening of walawaani ngarn, a welcome place to support students, their families and our school community.

The dream, along with partnered agencies, was to create a culturally safe space to access appropriate services, ensuring each student has the best possible chance to thrive and meet their full potential.

Since VHS opened in 1993, parents and carers ability to access required support was not easy due to lack of services and public transport in our local area. Students often experienced long delays or minimal access to the help they needed. This was the driving force behind seeing the dream of a Wellbeing Hub become a reality on the grounds of our school.

Thank you to our VHS Wellbeing Team, our CAPA and TAS teams, Student Representative Council, dhawaari dancers, P&C canteen, staff & students who worked tirelessly behind the scenes to make the walawaani ngarn opening the success it was.

We would like to acknowledge the presence of our Elders, Fiona Phillips MP, Department of Education dignitaries, Principal Winfield, VHS Senior Executives & local primary schools staff who attended the opening, plus the formidable representatives of the agencies who are front and foremost, working together with us to ensure the wellbeing of our students is met each day.

It really does take a village to raise a child.

This week's newsletter, as always, will be linked to our Facebook page. A section will be dedicated to detailing a list of Agencies, credits, contact information, more photos, videos, links to live radio interviews and much more.

This truly was **'History in the Making'**.

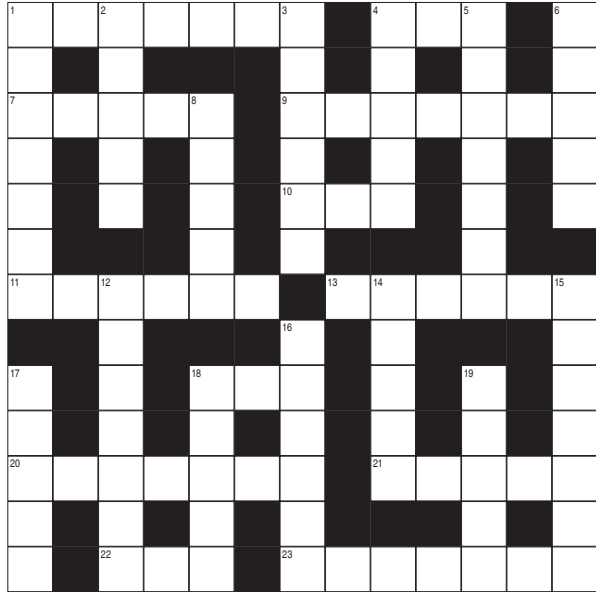
Photo credit and many thanks to [Inspire Productions Photography & Videography](#).

Across

1. Small piece of toasted or fried bread; served in soups or salads (7)
4. North Atlantic food fish (3)
7. Cake topping (5)
9. Kitchen implement (7)
10. Consumed (3)
11. Main course (6)
13. Often used to coat 4 Across (6)
18. Small vegetable (3)
20. Rich bread usually made with chopped candied or dried fruit, nuts and spices (7)
21. Hard outer layer formed during baking (5)
22. Beer (3)
23. Large drinking vessel (7)

Down

1. Culinary art (7)
2. Edible bulb (5)
3. Nuts or fruit pieces in sugar paste (6)
4. Small very thin pancake (5)
5. Dish served as the last course of a meal (7)
6. Mostly greens served with a moist dressing (5)
8. Small juicy fruit (5)
12. Granular preparation of cassava starch (7)
14. Jelly passed on fish or meat stock (5)
15. Cooked with a dry heat, usually in an oven (7)
16. Hard wrinkled edible seed (6)
17. Alimentary paste (5)
18. Edible seed of a pod-bearing plant (5)
19. Mild Dutch cheese (5)



© Puzzle Choice

JUNE PUZZLE SOLUTION



Peter Rose EyeQ Optometrists
 Visit eyeq.com.au for convenient online bookings

Vincenia Marketplace,
 8 Moona Creek Rd, Vincenia
 4443 9979




Alinta Southam-Rogers
Anna Richter



your local experts in eyecare

KIDS

O
R
N
E
R



Match the Viking to his hat and give the Viking and his many hats some colour.

I went to dinner with a couple of Vikings and they kept tapping on the table and laughing. I finally asked what was so funny and they said:
"You wouldn't get it, it's Norse code"

Q. Want to hear a Viking joke?

A. Never mind, there's Norway you'd get it!

Q. What do you call a vegetarian Viking?

A. Nor-vegan

HUSKISSON PICTURES



For dates, information & movie times log onto our website

www.huskipics.com.au

Program Information: 4441 6343

Administration: 4441 5076

AIR CONDITIONED FOR YOUR COMFORT



KENNEDY & COOKE
THE SOUTH COAST LAWYERS **and**

SOUTH COAST CONVEYANCING
A DIVISION OF KENNEDY & COOKE LAWYERS

WE CAN ASSIST WITH ALL OF YOUR LEGAL AND
CONVEYANCING NEEDS.

CALL FOR AN APPOINTMENT TODAY.

44 132 132

Shop 2/26 Paradise Beach Rd, Sanctuary Point | Shop 1/185 Jacobs Drive, Sussex Inlet

www.kennedycooke.com.au

TRISH BROOME

PROPERTY | POWERED BY SMILE ELITE

Jervis Bay regional experts with national and international reach.

Committed to showcasing your property to the largest possible audience with the resources of the entire Smile Elite and Sydney Country Living Group instantly available, creating a competitive edge to deliver the highest possible price.

Trish Broome - Principal / Licensed Agent

M: 0447 661 388

E: trish.broome@smileelite.com

trishbroomeproperty.com.au

PROUD PARTNERS WITH SYDNEY COUNTRY LIVING





 **SCAN ME**



**LOOKING FOR
A REAL ESTATE
AGENT?**

Info@dwellrealty.com.au
02 4443 6635
3/134 Island Point Rd,
St Georges Basin NSW 2540



Printed and typeset by Sanctuary Point Printing - Ph/Fx: (02) 4443 0014

Billie-May Ewings CONVEYANCING

Personal, Professional Conveyancing for the South Coast



There is no longer a need to leave the Bay and Basin to access exceptional, award winning conveyancing services. The Bay and Basin now have a full time Conveyancing firm at Sanctuary Point (conveniently located behind the Bendigo Bank).

(02) 4408 3030
3/200 Kerry Street,
Sanctuary Point

Billie-May Ewings Conveyancing
Licensed Conveyancer
No. 05003916
ABN: 12 103 155 128